

MIMSAL



Healthcare Lighting

2021

MIMSAL

MIMSAL

CATALOGUE HEALTHCARE LIGHTING 2021

© MIMSAL TRADE S.L.

C. Mollet 17, Pol. Ind. Palou Nord
08401 Granollers (Barcelona) - Spain
Tel. +34 930 139 860
mimsal@mimsal.com
www.mimsal.com



MIMSAL is a specialized lighting solutions supplier for the healthcare sector. We offer a wide range of luminaires designed to satisfy the diversity of the end-user needs and for each activity sector, by offering technical advice and commercial support to the professionals / prescribers of the healthcare.

Our products are engineered for easy mounting, with modern electronic components and light sources for the best energy efficiency and economy.

Our products and solutions are manufactured and certified in accordance with Regulation (EU) 2017/745 of the European Parliament and of the Council on medical devices.

MIMSAL complies with the quality certification ISO 9001 and ISO 13485.



LUXIFLEX LED

LUXIFLEX LED PLUS

Luxiflex is a cold light luminaire, versatile with a compact design. Luxiflex is designed for examination procedures that require great performance.

Flexibility

Flexible arm allows to adjust the height to assure the proper working distance.

Compact design

Luxiflex offers easy use, thanks to its compact LED head with a diameter of 8 cm and its switch located at the base of the lamp. These features make this model an ideal luminaire for the most demanding examinations procedures.

Mounting options

The standard version includes AH table clamp. As for accessories, we offer a wide selection of supports such as wall supports, wall extension arms, trolleys stand and rail brackets.

High performance LED

Luxiflex LED	15.000 lux at 50 centimeters.
Luxiflex LED Plus	35.000 lux at 50 centimeters.

LUXIFLEX LED

Technical Details (Cod. I0104AOLED)	
Light source	LED 6W 15°
Lamp lifetime	50.000 hours
Lux a 50 centimeters	15.000 lux
Colour temperature	4.500 °K
Colour rendering	80%
Total length	85 cm
Colour	White

LUXIFLEX LED PLUS

Technical Details (Cod. I0104NL)	
Light source	LED 10W 14°
Lamp lifetime	50.000 hours
Lux a 50 centimeters	35.000 lux
Colour temperature	4.500 °K
Colour rendering	97%
Total length	85 cm
Colour	White





Wall support
Cod. B0101800



AH table clamp
Cod. B010190



Rail Plus bracket
Cod. 82026



Extension wall arm
Cod. B0101S0



Trolley stand
4 kg Cod. 09655
8,8 kg Cod. 09651

LUXIFLEX SENSOR LUXIFLEX SENSOR PLUS

Luxiflex Sensor is a cold light luminaire, versatile and with a compact design. Luxiflex Sensor is manufactured with a contactless switch. This luminaire is designed for examination procedures that require great performance.

Flexibility

Flexible arm allows to adjust the height to assure the proper working distance.

Compact design

Luxiflex offers easy use, thanks to its compact LED head with a diameter of 8 cm and its contactless switch located at the base of the lamp. These features make this model an ideal luminaire for the most demanding examinations procedures.

Mounting options

The standard version includes AH table clamp. As for accessories, we offer a wide selection of supports such as wall supports, wall extension arms, trolleys stand and rail brackets.

High performance LED

Luxiflex Sensor	15.000 lux at 50 centimeters.
Luxiflex Sensor Plus	35.000 lux at 50 centimeters.

Contactless switch

Allows to switch the lamp on and off without contact.



LUXIFLEX SENSOR

Technical Details (Cod. I0104AOLEDSR)	
Light source	LED 6W 15°
Lamp lifetime	50.000 hours
Lux a 50 centimeters	15.000 lux
Colour temperature	4.500 °K
Colour rendering	80%
Total length	85 cm
Colour	White

LUXIFLEX PLUS SENSOR

Technical Details (Cod. I0104NLSR)	
Light source	LED 10W 14°
Lamp lifetime	50.000 hours
Lux a 50 centimeters	35.000 lux
Colour temperature	4.500 °K
Colour rendering	97%
Total length	85 cm
Colour	White



Trolley stand
 4 kg Cod. 09655
 8,8 kg Cod. 09651



Contactless switch



Wall support
 Cod. B0101800



AH table clamp
 Cod. B010190



Rail Plus bracket
 Cod. 82026



Extension wall arm
 Cod. B010150

LUXIFLEX

Luxiflex is a versatile and stylish lamp for examination and minor surgery procedures, ideal in health centers, clinics and hospitals.

It is also suitable for veterinarian examinations and procedures.

Flexible arm allows to adjust the height to assure the proper working distance.

Low temperature lamp without infrared radiation. Switch located on the arm's base.

It can be adapted to: trolley stand, table clamp (included in standard version), rail support, wall support and extension wall arm.

Also available in LED version: Luxiflex LED and Luxiflex LED Plus.



LUXIFLEX HALOGEN

Technical Details		(Cod. I0104AO)
Light source	Hal MasterLine ES 35W 8°	
Lamp lifetime	5.000 hours	
Lux a 50 centimeters	50.000 lux	
Colour temperature	4.000 °K	
Colour rendering	95%	
Total length	85 cm	
Colour	White	
Glass filter for colour temperature		



Wall support
Cod. B0101800



AH table clamp
Cod. B010190



Rail Plus bracket
Cod. 82026



Extension wall arm
Cod. B0101S0



Trolley stand
4 kg Cod. 09655
8,8 kg Cod. 09651

ACCESSORIES

WALL B SUPPORT

Wall support.
Separation between axis-wal: 7cm
Cod. B0101800



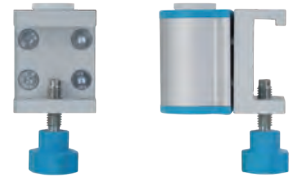
AH TABLE CLAMP

Table fixing.
Cod. B010190



RAIL PLUS BRACKET

To adapt to U.C.I rail.
Cod. 82026



TROLLEY STAND

H=92 cm Ø 61 cm.
4 kg Cod. 09655
8,8 kg Cod. 09651



EXTENSION ARM + WALL B SUPPORT

It provides 40 cm rotation from the wall.
Cod. B010150





mimsal

MIMSAL TRADE S.L.

C. Mollet 17, Pol. Ind. Palou Nord
08401 Granollers (Barcelona) - Spain
mimsal@mimsal.com - www.mimsal.com