

# EDX

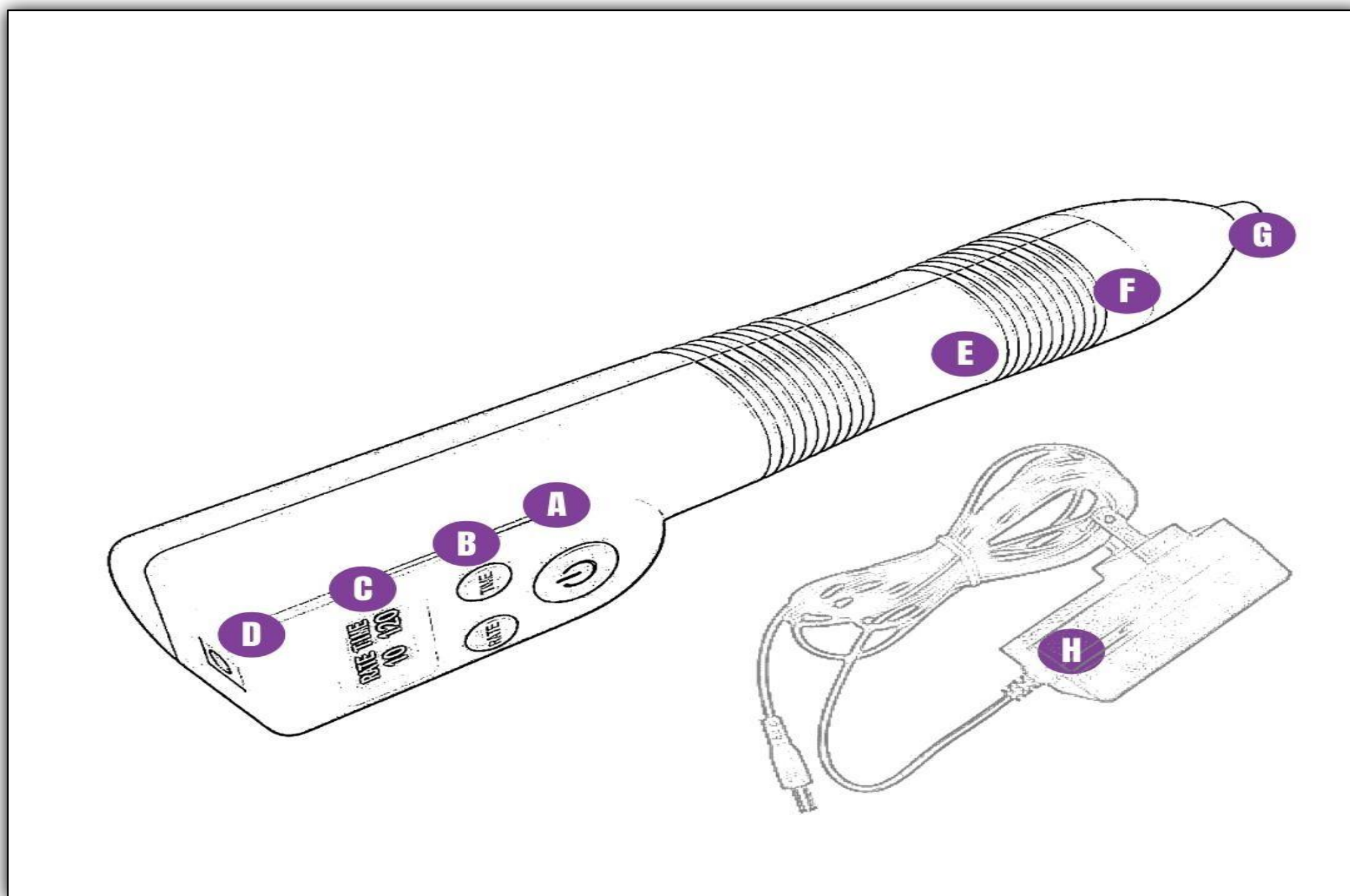
Shock Wave Therapy Device

OCE-ESWT-003  
Type II

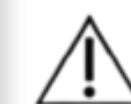


VERSION A-1 | 2021





- 【A】 Power
- 【B】 Settings
- 【C】 Display
- 【D】 Power Jack
- 【E】 Handle
- 【F】 Fixation Cone
- 【G】 Transmitter
- 【H】 Power Cord



**WARNING:** Failure to follow the user manual instructions may result in accident, injury, and/or damage to the device.

## EDX Setup

1. Place the device on a flat surface.
2. Insert the Cord (H) into the Power Jack. (D).
3. Plug the power cord into the wall outlet.

## Basic Operations

1. Press the **F** button to adjust the frequency.
2. Press the **T** button to adjust the use time.
3. Press the **⏪** button to start EDX therapy.

# Controls & Settings:

## [F] Options:

- L** 10 Hz
- M** 15 Hz
- H** 20 Hz

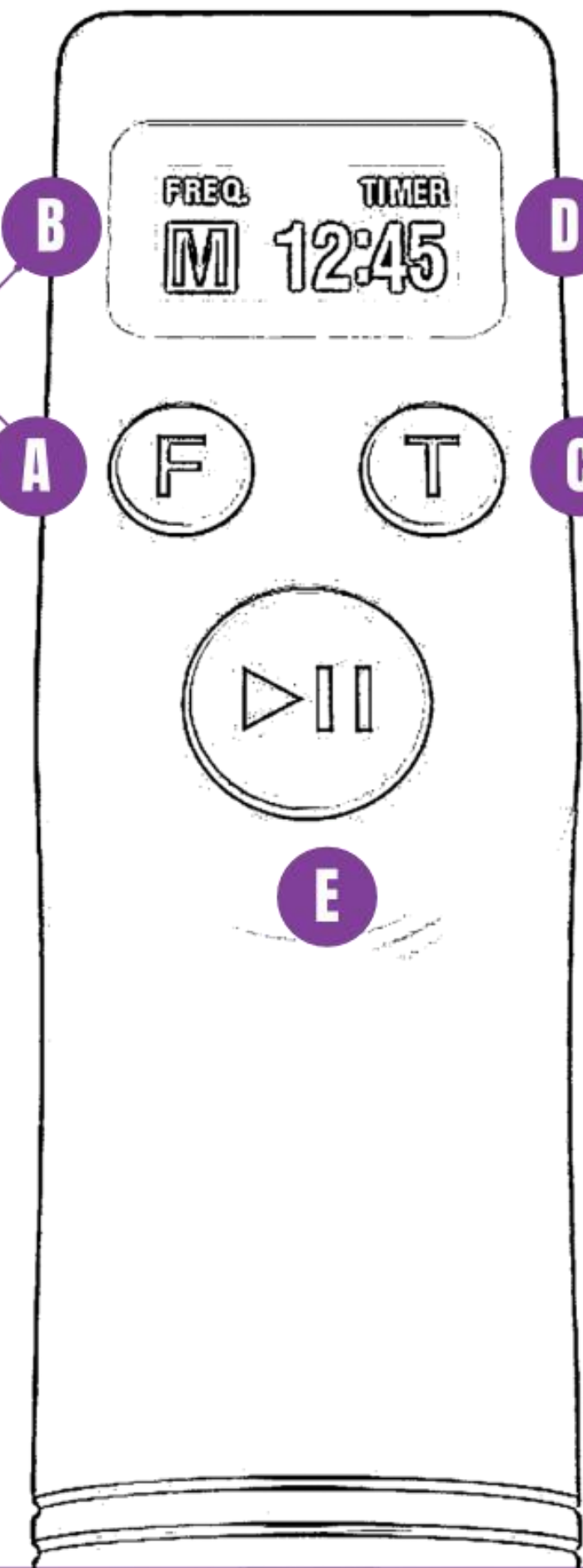
## T. Options:

- 01:00
- 02:00
- 03:00
- 04:00
- 05:00

- Press the **F** button to adjust the frequency [speed] to Low, Medium, or High.
- Press the **T** button [time] to adjust treatment from 1:00 min. to 5:00 min.
- Press the **▶||** button to Start, Pause, or Stop the EDX device from delivering waves.

⚠ EDX must be connected to power to operate.

Frequency Button  
 Frequency Display  
 Time Button  
 Time Display  
 Start / Stop Button



# Contraindications & Precautions

- Blood disorders, coagulation problems or the use of anticoagulants
- Blood thinning medications (warfarin)
- Shockwave therapy should also not be used if there are any open wounds or tumors or during pregnancy pregnant. People using blood-thinning medications or who have severe circulatory disorders may also not be eligible for treatment.
- Treatments with EDX may cause temporary irritation, petechial, bruising, or swelling.



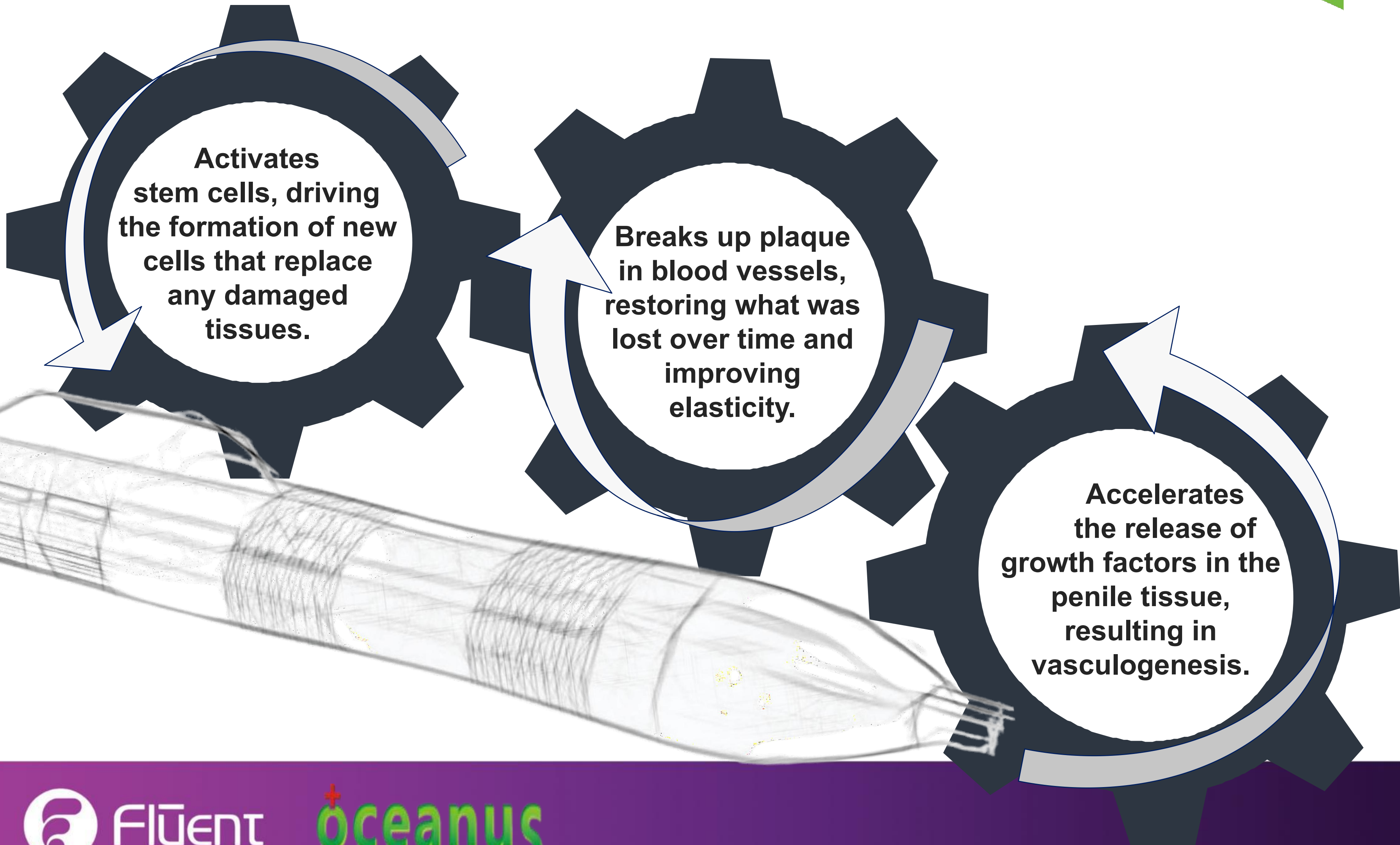
**WARNING:** This non-medical device is intended as a sexual enhancing aid only. Consult your physician should any complication occur and discontinue further use immediately.



**CAUTION:** Failure to follow product instructions or to exceed suggested settings, as well as performing therapeutic applications may result in inappropriate product performance and damage.



# How Shockwave Works:



**Activates stem cells, driving the formation of new cells that replace any damaged tissues.**

**Breaks up plaque in blood vessels, restoring what was lost over time and improving elasticity.**

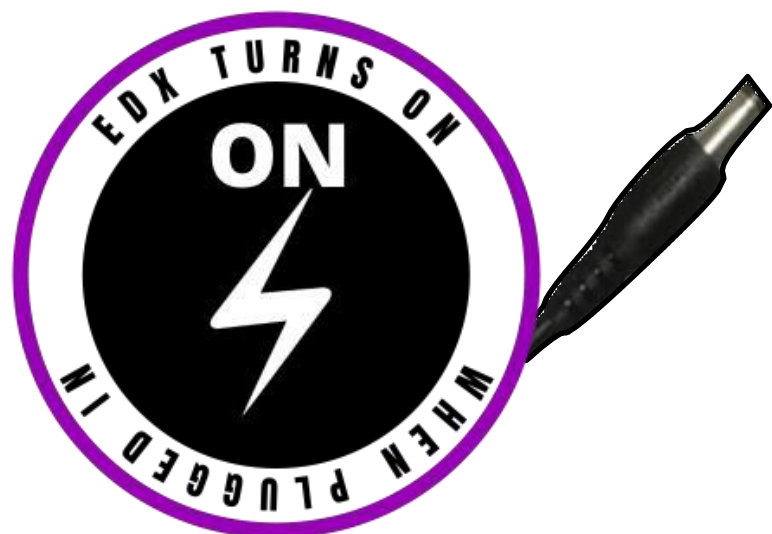
**Accelerates the release of growth factors in the penile tissue, resulting in vasculogenesis.**

## ASSEMBLE EDX

1. Insert the round DC plug of the power adapter into the socket on the back of the EDX after attaching the power cord to a wall outlet.

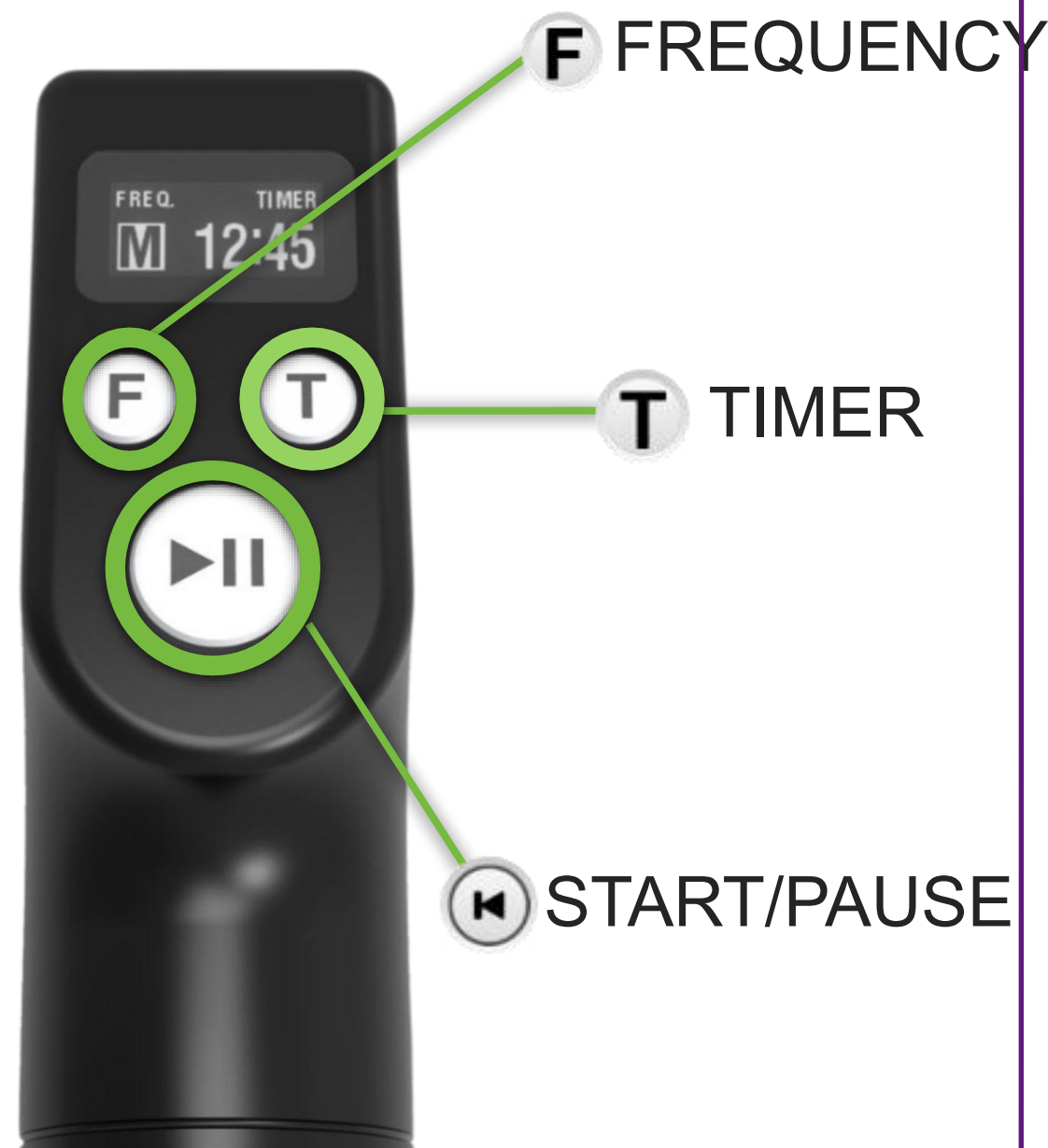


- To Wall Outlet
- To EDX Hub

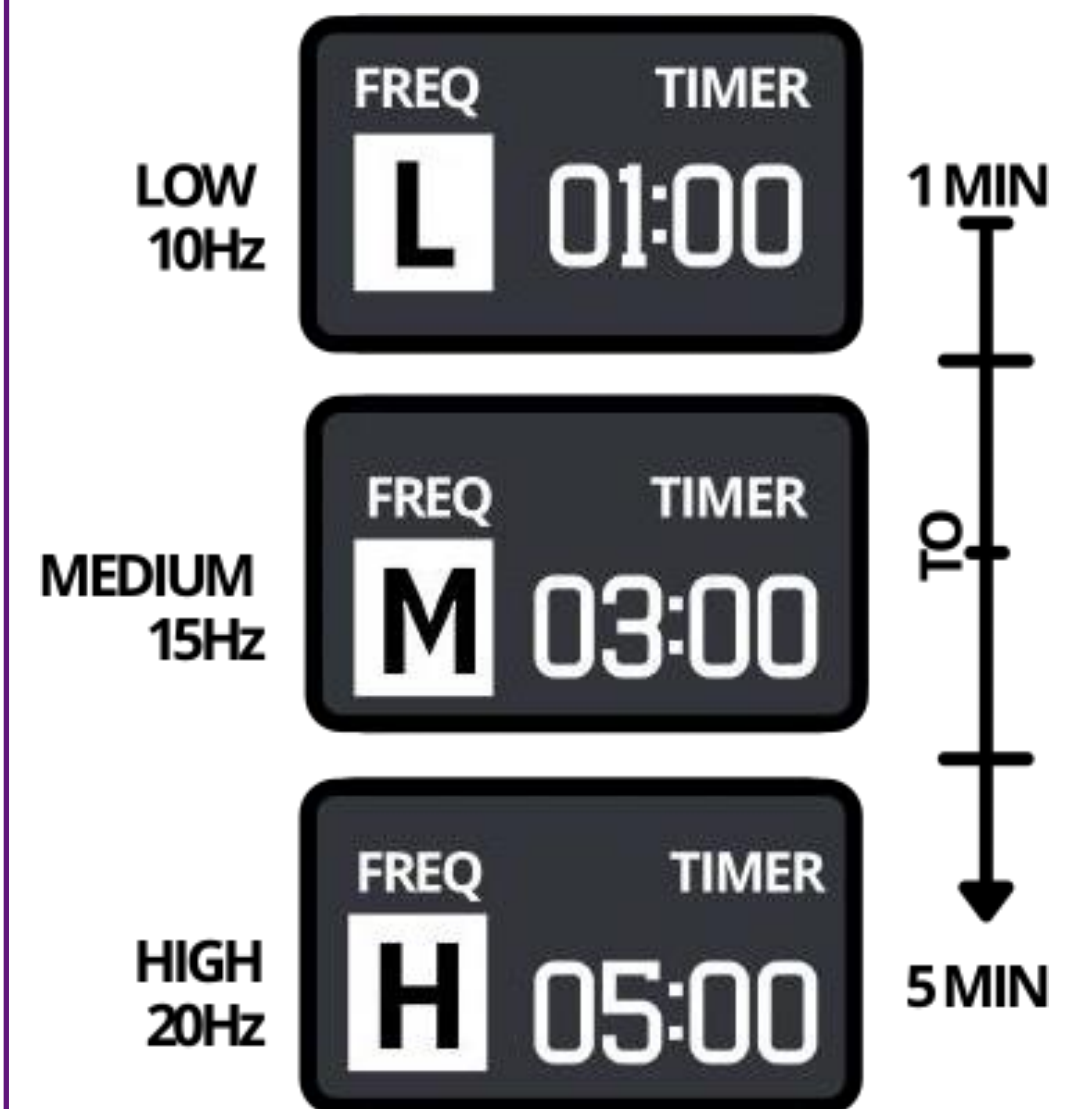


2. EDX automatically turns 'ON' and enters a standby mode when connected to electricity.

## EDX CONTROLS



## EDX DISPLAY



3. Set Frequency [F] Rate by pressing the [F] key to toggling through the options- (L) low, (M) Medium, and (H) High.
4. Set Timer by pressing the (T) key toggling from one minute through five minutes maximum time.
5. When ready, press Start/Pause button to begin therapy.



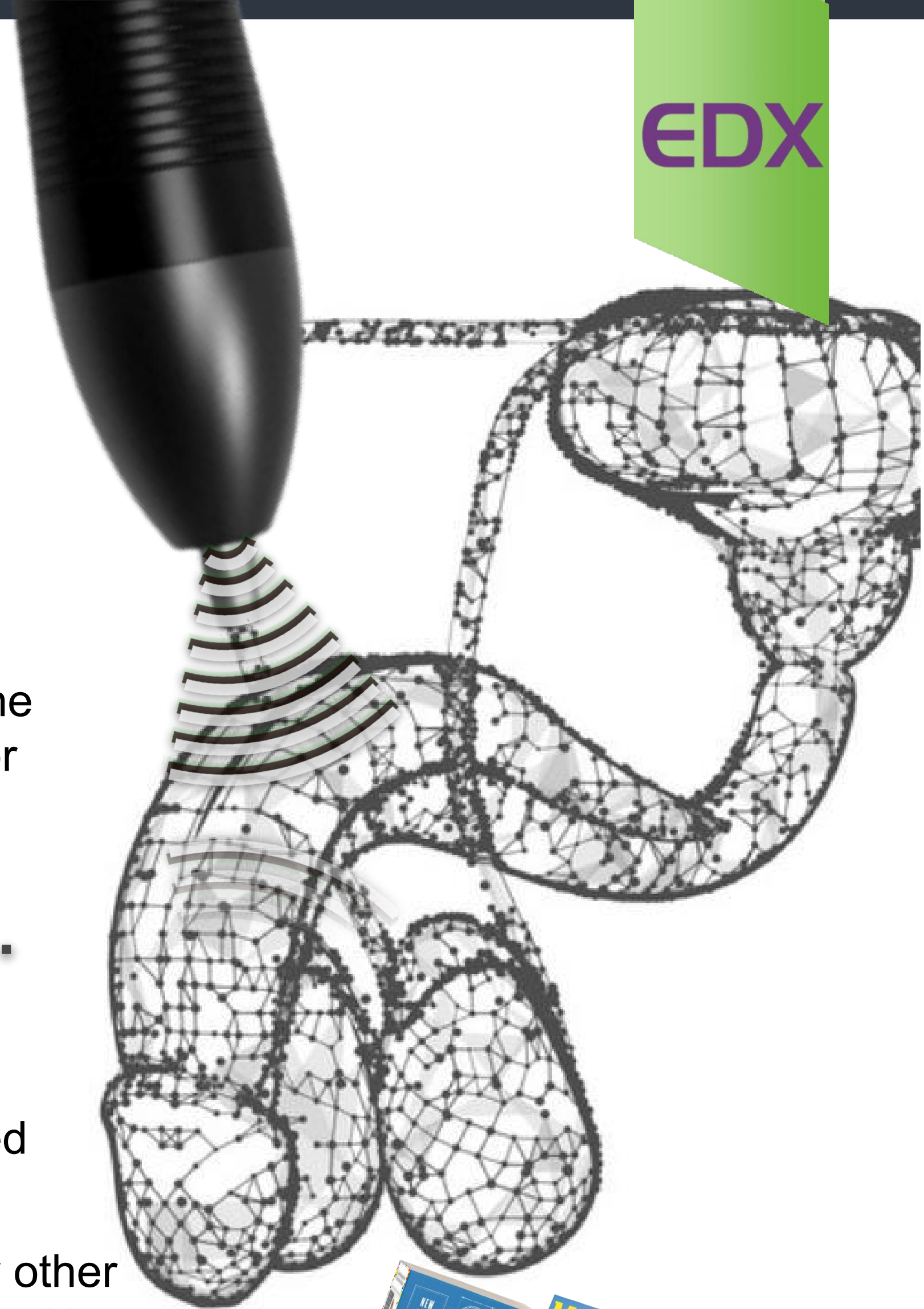
Shockwave therapy (also called ESWT, or Acoustic Wave) with your EDX is similar to a physical therapy that uses pressure waves to stimulate natural healing and improving sexual function in men- even if they suffer from a medical condition such as Erectile Dysfunction (ED) or Peyronie's disease.

Numerous clinical studies on erectile dysfunction have demonstrated a significant improvement in perfusion and the formation of new blood vessels (arteries) which is crucial for getting the best result..

## After Only 6 to 12 Sessions...

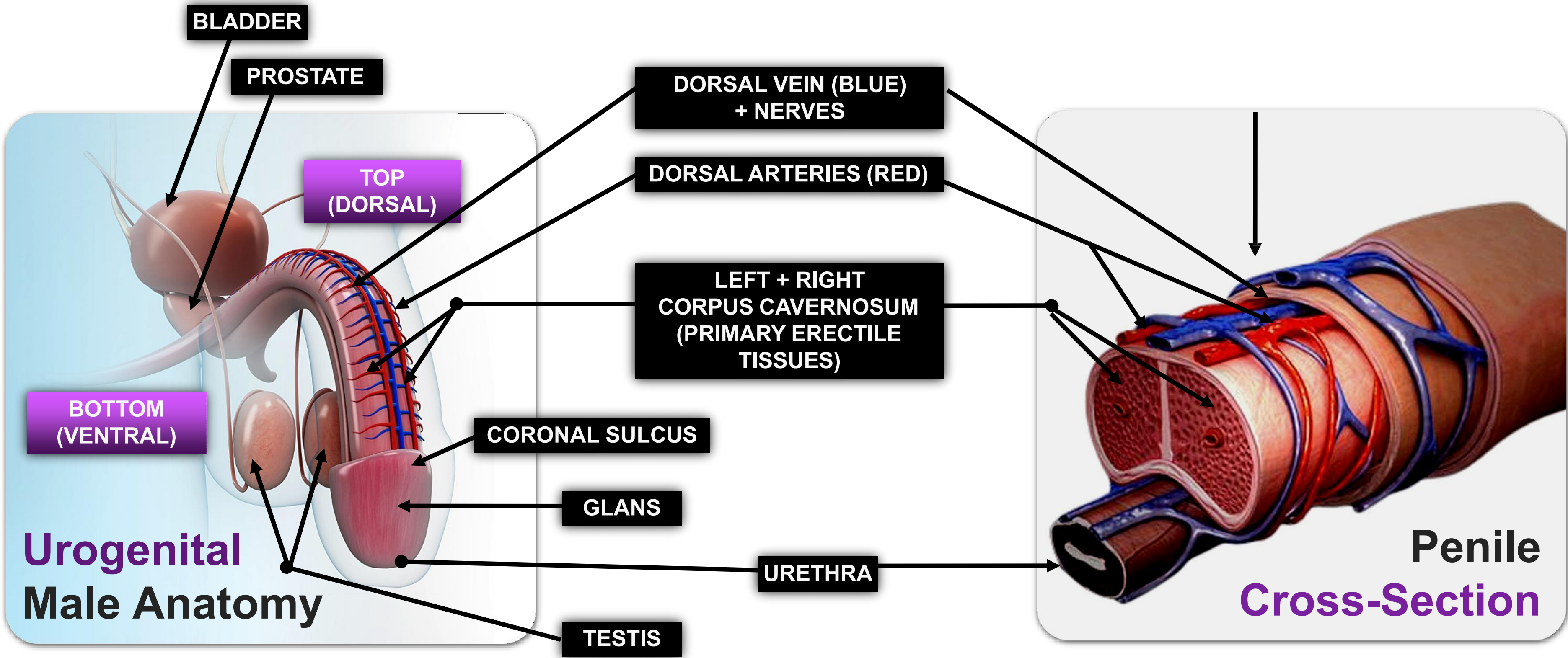
Men may experience stronger, harder, and longer-lasting erections as natural blood flow to the penis is restored. The penile nerves share the same benefits; a process called neurogenesis, that can enhance the sensitivity.

Healing and restoration won't happen overnight. Like many other exercises, EDX is recommended two to three times weekly with a day off after use to allow for recovery. See Protocol on page 8.





Erectile dysfunction is defined as the inability to achieve and maintain an erection sufficient for satisfactory sexual intercourse. Understanding the male anatomy is prerequisite to the success of EDX therapy because there are target areas that benefit from Shock Wave Therapy; As well as structures that could potentially be painful or damaged.





**Input Voltage: 100-240VAC**

**Adapter: 100-240V~ 50/60 Hz**

**EN 60601-1:2006/A1:2013 Medical electrical equipment —**

**Part 1: General requirements for basic safety and essential performance.**

**EN 60601-1-2:2015 Medical electrical equipment —**

**Part 1-2: General requirements for safety — Collateral standard: Electromagnetic compatibility — Requirements and tests.**

**Output Voltage: DC 24V/28.8W, Max 1200 mA**

**External Temperature therapeutic head below 41°C**

**Built-in Timer: 1/2/3/4/5 minutes automatic shutoff**

Status Display:  
Press the frequency button (F) and time button (T) at the same time to enter the status interface

Version:20210518  
Used time:55  
Counter:40935  
Temperature:34.5°C

Item	Temperature Requirements	Humidity Requirements	Atmospheric Pressure
Work environment	10°C-35°C	10%-75%RH	700hPa-1060hPa
Storage / Transportation environment	-20°C-55°C	10%-93%RH	700hPa-1060hPa

## **REFERENCES:**

**Chitale S, Morse M., Swift L, et al. BMJ Int 2010**

**Goldberg D, Andriessen A, Gold M. Radial shockwave therapy for male erectile rejuvenation in a dermatology and/or medical aesthetic practice. J Cosmet Dermatol. 2019;18(6)1596-1600. doi:10.1111/jocd.13022**

**Hatzichristou DG, Kalyvianakis DE. EAU, 2015 abstract 124**

**Kitrey ND, Greenwald I, Appel B, et al. J Urol 2016. Poilakis V, Skriapas K, de Vried R, et al. Asian J Androl 2006.**

**Zimmermann R, Cumpas A, McLea F, et al. Eur Urol 2009. Srinivas Reddy RK, Schultz T, et al. Can J Urol 2015.**

**Vardi Y, Appel B, Kirchevsky A, et al. J Urol 2012.**





# EDOX



FREQ.      TIMER  
**M**    05:00

**F**

**T**

▶ ||

**oceanus**