

ELECTRIC LICE COMB PEIGNE À PUCES ÉLECTRIQUE

All serious accidents concerning the medical device supplied by us must be reported to the manufacturer and competent authority of the member state where your registered office is located.

Il est nécessaire de signaler tout accident grave survenu et lié au dispositif médical que nous avons livré au fabricant et à l'autorité compétente de l'état membre où on a le siège social.

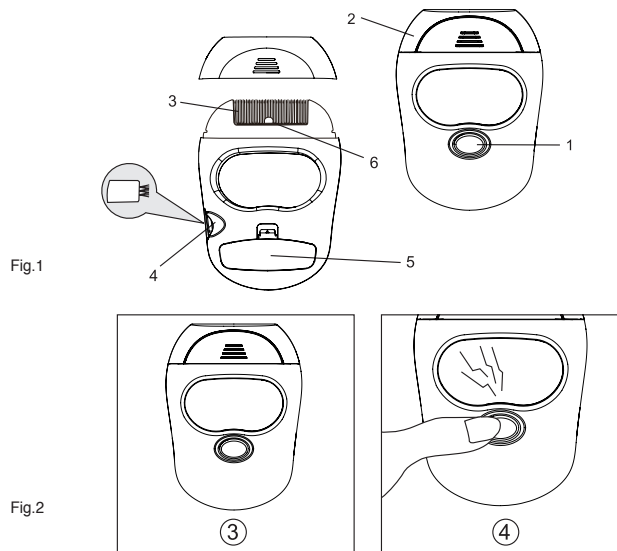


Fig.1

Fig.2

ENGLISH

INTEND USE

The removal of the head lice and their eggs(nits) from hair.

RECOMMENDATIONS FOR EFFECTIVE USE

- Only for use on dry hair.
- Ensure that the electric comb does not get humid or wet during use.
- We recommend that you use a repellent treatment (cream, shampoo, etc..) after using the electric comb, in order to avoid a new outbreak.

PRECAUTIONS BEFORE USE

It is recommended to follow these instructions and observe the following safety points:

- The use of electric lice comb is not recommended in the following cases:
 - Do not use on people with pacemakers.
 - Do not use on people who have epilepsy or heart disease.
 - Do not use on damp or wet hair.
 - Do not leave the comb in reach of children.
 - Do not use the comb on another family member without first disinfecting it.
- Disinfect the electric comb and its teeth after each use, using a cloth dampened in a solution of 70% alcohol (remove the battery during cleaning of the electronic comb). Wait until it is completely dry before using it again.
- Do not use the comb if the teeth are deformed, as this may cause a short circuit in the comb.
- Use electric comb only for the purpose for which it was designed, as described in the instruction manual.
- Place the protective cover back on after use in order to protect the teeth.

SAFETY INSTRUCTION

For your safety, it is recommended that you read this User Guide very carefully, and comply with the following instruction.

- Using the appliance only as intended in accordance with the instructions provided in this guide.
- This electric device is not a toy, avoid the reach of child.
- The child who is under the age of 3, is not suited for this appliance.
- Children should be supervised by an adult while using this electric device.
- Consult the physician before using this unit, if you have a pacemaker, artificial limbs or any electronic implant.
- Do not operate this unit close to a mobile telephone, a micro wave oven, or a television set (away more than 1 meter).
- People who suffer from epilepsy or heart disease are not recommended to use this appliance.
- Do not use this unit on damp hair or any undo knots or braids.
- Avoid the wounded, cracked or dry skin, or directly contact with your ears, eyes and mouth.
- Avoid the direct exposure of sunlight, and upon any hot surface.
- Keep the unit from moisture, or any liquid.
- Do not use the unit, if the housing or comb is damaged, if the unit does not function properly or if it has been immersed by liquid.
- Prevent accident or damage to the unit by keeping the unit away from clothing, bristles, wires, strings, shoelaces, threads etc.
- Always switch off the unit when not in use.
- Remove the battery if the appliance is not to be used for extended period.

INTRODUCTION

The electric lice comb is one viable option to consider in the quest of eradicating head lice so they will stop spreading through your family member's hair and scalp. It is certainly no secret that an infestation of lice can make life difficult for everyone in the household, but thanks to modern technology -- an electric lice comb, the process of getting rid of these pests can be just a bit easier.

DESCRIPTION OF THE APPLIANCE AND SUPPLIED ACCESSORIES (Fig.1)

- | | |
|---------------------------------|------------------------|
| 1. On/Off switch (press button) | 4. Cleaning brush |
| 2. Protective cover | 5. Battery compartment |
| 3. Electric teeth | 6. LED light |

INSTALLATION OF THE BATTERIES

Open the battery lid by lifting the point "5". Insert one AAA battery, observe the proper polarity (+/-) of the battery as indicated on battery and on battery compartment. A polarity error can damage your appliance and compromise the guarantee.

OPERATION (Fig.2)

1. Press On/Off switch button "1" for two seconds to operate the appliance. LED light will power on, buzzer will beep three seconds long to indicate the operation.
2. Pose the appliance as normal comb. Be sure using the unit on dry hair. Undo the knots or braids before

using the unit.

3. While operating the unit, LED will light on and the buzzer will beep every three seconds in the meantime.
4. The buzzer will turn to be short and quick beep sound, three times in a second once the teeth contact with a louse or egg.
 - 4-1. The voltage of teeth will extinguish the intruder.
 - 4-2. When detecting low battery voltage, it will turn off automatically after 7 short beeps and LED flash indication.
 - 4-3. Automatically shutdown if left idle over 3 minutes.
 - 4-4. Be sure to clean the comb with the cleaning brush thoroughly after every usage to re-operate the comb continually.
5. After every usage, remember to switch off the unit and clean the comb with cleaning brush thoroughly, keep the protective cap "2" back on the unit during storage.

CLEANING AND MAINTENANCE

1. Remove the battery before cleaning the appliance.
2. Avoid using any liquid, strong detergents to scrub the unit.
3. For the housing, use a dry, soft paper or fabric cloth to clean. For teeth, use the accessory of cleaning brush to remove the clogged.
4. Make sure no water gets into the unit while cleaning, and never immerse the unit in water.
5. The storage should be in a clean, dry and cool, ventilated location.
6. Direct exposure to sunlight will damage the unit.

TECHNICAL SPECIFICATIONS

Model name	24405
Power supply	AAA battery x 1
Export Voltage	100~250 V
Battery life	Eight hours in continuous use
Auto switch off	Yes
Dimension	10.36 X 7.57x 2.66 cm
Weight	100g (Battery included)
Certificate	CE, RoHS

STORAGE AND TRANSPORTATION ENVIRONMENT

Temperature	-20°C to 60°C (-4°F to 140°F)
Humidity	<95% (non-condensing)
Atmospheric Pressure	525mmHg to 795mmHg (700 to 1060hPa)

OPERATING ENVIRONMENT

Temperature	5°C to 40°C (41°F to 104°F)
Humidity	<95% (non-condensing)
Atmospheric Pressure	525mmHg to 795mmHg (700 to 1060hPa)

BATTERY DISPOSAL

1. Please dispose the product and battery separately.
2. The product and batteries should not be disposed with household waste.
3. Please follow local waste/ recycling/ battery disposal regulations.

SYMBOLS INFORMATION

	Follow instructions for use		WEEE disposal
	Humidity limit		Caution: read instructions (warnings) carefully
	Medical Device compliant with Regulation (EU) 2017/745		Temperature limit
	Atmospheric Pressure Limitation		Date of manufacture
	Product code		Manufacturer
	Lot number		Recycle
	Authorized representative in the European community		Medical Device



Disposal: The product must not be disposed of along with other domestic waste. The users must dispose of this equipment by bringing it to a specific recycling point for electric and electronic equipment.

GIMA WARRANTY TERMS

The Gima 12-month standard B2B warranty applies.

REF EL-1003 (Gima 24405)



Biocare Asia Co., LTD,
No. 260, Mayun Road,
New District Suzhou, Jiangsu, 215129
PEOPLE'S REPUBLIC OF CHINA
Made in China



Shanghai International Holding Corp. GmbH (Europe)
Eiffestrasse 80, 20537 Hamburg, Germany

Imported by / Importé par:
Gima S.p.A.
Via Marconi, 1 - 20060 Gessate (MI) Italy
gima@gimaitaly.com - export@gimaitaly.com
www.gimaitaly.com

