



Fetal Doppler System Vascular Doppler System

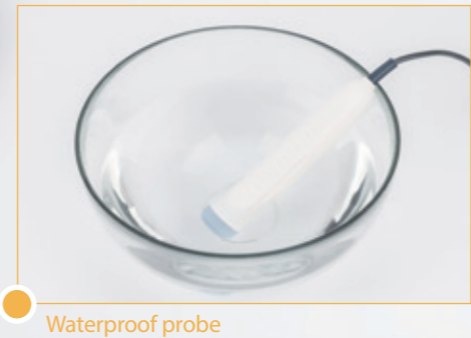
Handheld Doppler
Desktop Doppler
Vascular Doppler

 **bistos**

Fetal Doppler



BT-200
Hi-bebe



Waterproof probe

Various Display type from low to medium budget



200S 200L/200T 200C

Various Frequency option

2MHz or 3MHz is available upon request.
(200T : 3MHz)

Waterproof probe

Even the most basic Doppler has waterproof probe suitable for water delivery. (IPX7)

Complimentary carrying pouch

All handheld Doppler comes with carrying pouch

FHR and sound management

Dedicated PC software enables save and manage FHR and heart sound data



Fetal Doppler



Interchangeable probe



BT-220
Hi-bebe S

Trend display

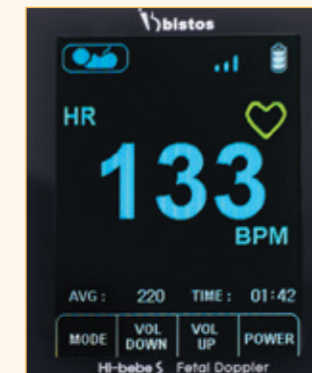
Large color LCD enables trend of FHR on screen.

Acoustic Stimulator

Stimulate sleeping fetus to acquire more accurate FHR.
High(100Hz) / Low(75Hz)

Interchangeable probe

2MHz or 3MHz probe can be used on one main unit



220C



220L

Recharging kit (Optional)

Just plug-in to microUSB cable recharge the battery and no need to change disposable battery.

Desktop Fetal Doppler



Vascular Doppler



BT-200
Hi dop

BT-250

Low Noise & Clear sound

Louder and better sound than handheld doppler. (5W)

Portability

Rechargeable battery and compact design makes portable use.



Trend data save

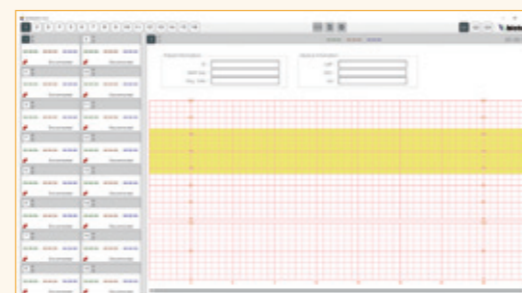
Store data up to 4 hours and up to 15 patients.

Large display

Lager dispaly than handheld Doppler enables to show more information on the screen.

Central Monitoring Software

Works on BCM-350 software along with other Fetal monitors.



Interchangeable probes

4, 5, 8MHz probe is available for multiple application.

4~5 MHz : Femoral, popliteal, subclavian artery and deep vein

8Mhz : dorsal pedal, radial, orbital artery and vein close to surface

High sensitivity

Detect small vessel location and Sound very easy by even unskilled patient.

Diabetic foot application

Optimized vascular Doppler for constant monitoring diabetic foot.



BISTOS Fetal Dopplers and Vascular Doppler Technical Specification

● Standard ○ Option

Category	Fetal Doppler		
Model	BT-200		
Order code	200S	200L	200C
Frequency (MHz)	2	2	2
Detection Range (BPM)	50 - 240	50 - 240	30 - 240
Audio Output (W)	1.2	1.2	1.2
Headphone Output	●	●	●
Interchangeable probe			
Waterproof probe	IP X 7	IP X 7	IP X 7
Display type		Mono	Color
Trend display			
Trend saving			
Patient ID			
Event Mark			
Quick Guide			
Multi Language			
Acoustic Stimulator			
Adult Heart Rate (BPM)			
Body Fat Measurement			
Battery Type	2 X 1.5V AA	2 X 1.5V AA	2 X 1.5V AA
Battery Run Time (h)	5	5	5
Rechargeable Battery	○	○	○
BCM-200 Software	●	●	●
BCM-350 Central Monitoring Software			
Weight (g)	190	190	190
Dimensions (mm) Main Unit (HxWxD)	128 X 75 X 26		
Carrying Pouch	●	●	●
Optional Accessories			
Warranty (Main unit)	1year	1year	1year

Fetal Doppler			Vascular Doppler	
BT-200	BT-220		BT-250	BT-200
200T	220L	220C	250	200V
3	2 or 3	2 or 3	2	4, 5, 8
50 - 240	50 - 240	50 - 240	30 - 240	50 - 240
1.2	1.2	1.2	5	1.2
●	●	●	●	●
	●	●	●	●
IP X 7	IP X 7	IP X 7	IP X 7	IP X 2
Mono	Mono	2.4" Color	3.2" Color	Mono
		●	●	
			4 Hours	
			●	
			●	
			●	
	●	●		
		40-200		
		●		
2 X 1.5V AA	2 X 1.5V AA	2 X 1.5V AA	3.7V Li-ion	2 X 1.5V AA
5	5	4	5	5
○	○	○	●	○
●	●	●	●	
			●	
190	190	200	1,100	190
128 X 75 X 26	132 X 66 X 27		90 X 250 X 118	128 X 75 X 26
●	●	●	○	●
	Rechargeable kit	Rechargeable kit	Clamp	
1year	1year	1year	2year	1year



BIO SIGNAL TOTAL SOLUTION

Bistos Co., Ltd. (Headquarter)

7th Fl., A Bldg., Woolim Lions Valley 5-cha, 302,
Galmachi-ro, Jungwon-gu, Seongnam-si,
Gyeonggi-do, Korea

Tel. +82 (31) 750 0340

Fax. +82 (31) 750 0344

bistos@bistos.co.kr

www.bistos.co.kr

Bistos America Inc. (US Branch)

11417 W Bernardo Ct Ste D, San Diego, CA 92117, USA

Tel. +1-868-433-6689

Fax. +1-888-391-5153