



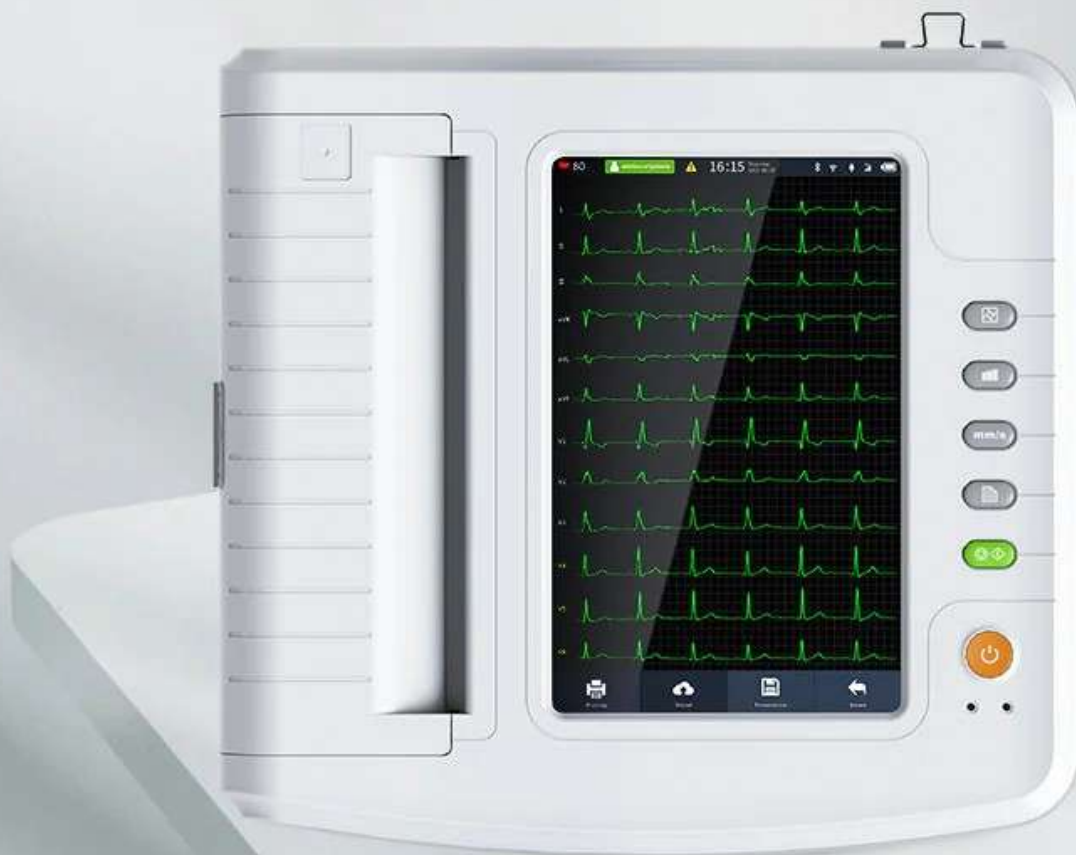
Care Health
Care Life

CONTEC

STOCK CODE:300869

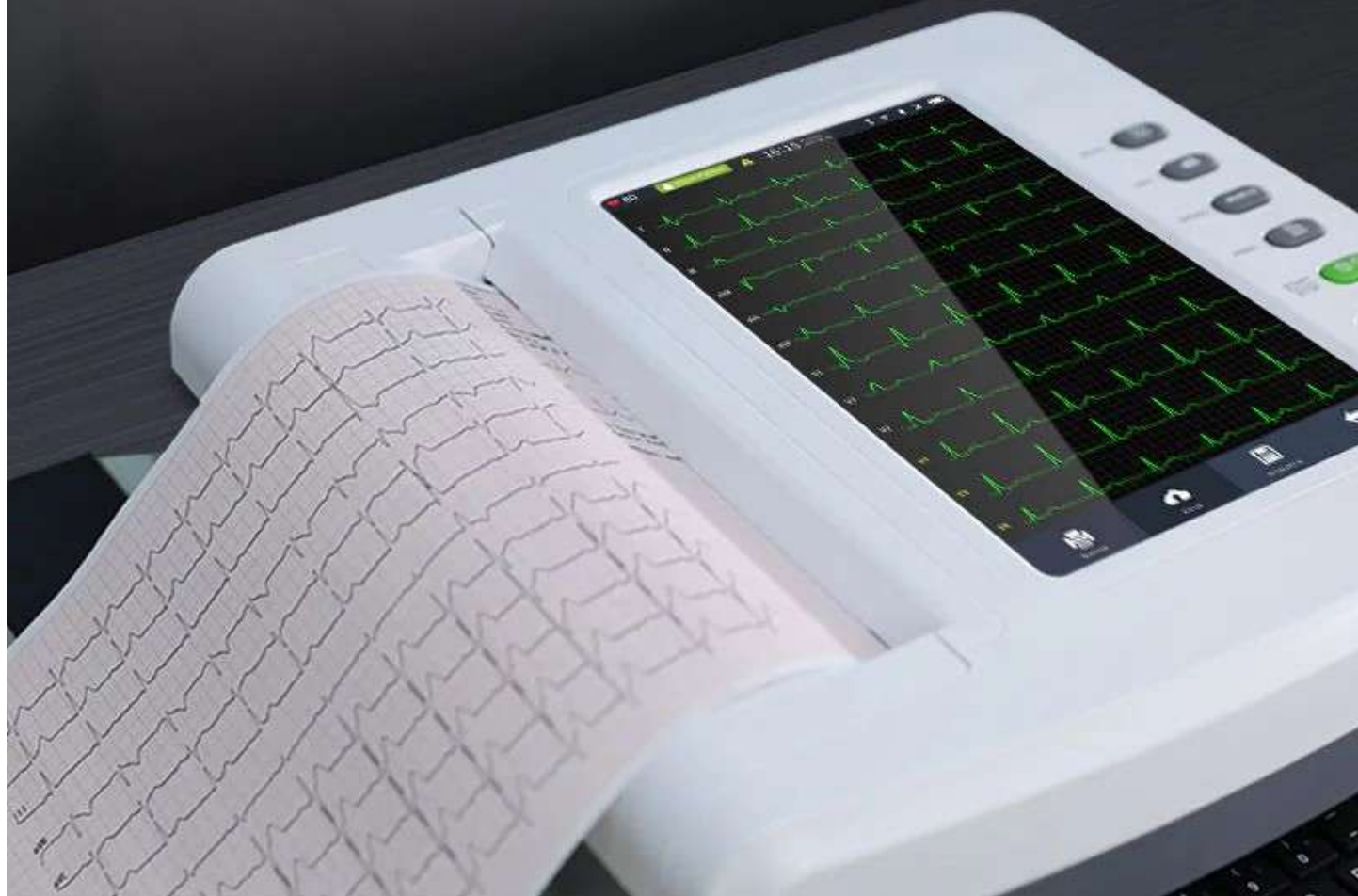
12-channel Electrocardiograph

ECG1212G



Built-in thermal printer

support roll paper/folding paper, and external USB devices (keyboard, mouse, scanner, printer), allows USB cable transmission for automatic case upload, report download, and printing.



10.1" High-resolution color LCD touch screen

Display with 1280*800 dots 10.1 inch high resolution color LCD, operate either by touch screen or function buttons, which is convenient and quick

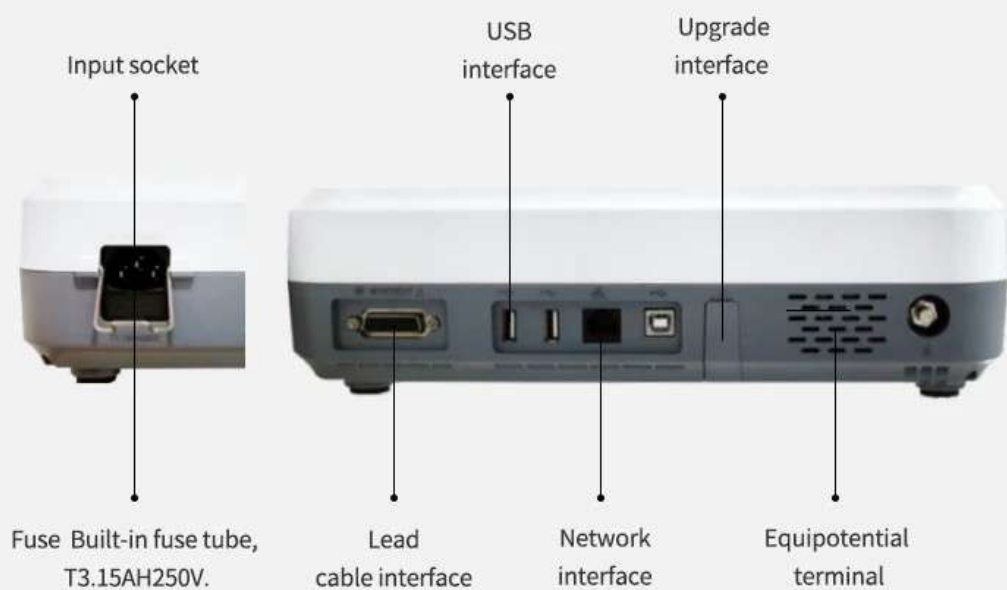


Large-capacity memory

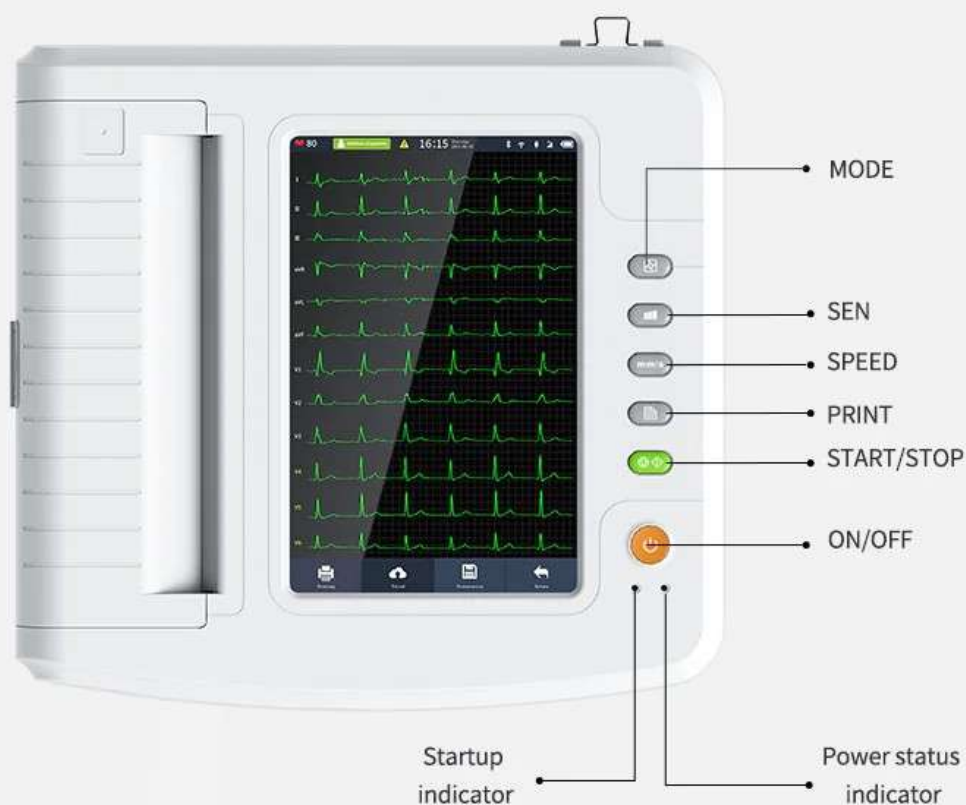
The built-in large-capacity memory can store at least 4000 medical records, convenient for case review and statistic.



2 Side view



3 Buttons

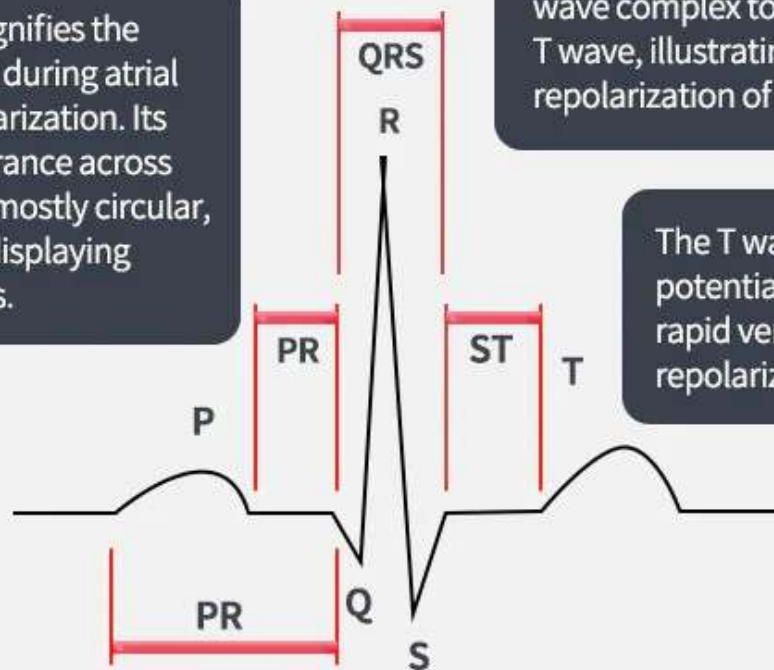


The QRS wave complex signifies the shifting position of ventricular muscle depolarization.

The P wave signifies the electrical shift during atrial muscle depolarization. Its typical appearance across most leads is mostly circular, occasionally displaying minor notches.

The segment refers to the line connecting the peak of the QRS wave complex to the onset of the T wave, illustrating the gradual repolarization of the ventricles.

The T wave reflects the potential alteration during rapid ventricular repolarization.



Bigeminy



Missed beat



Ventricular premature beat



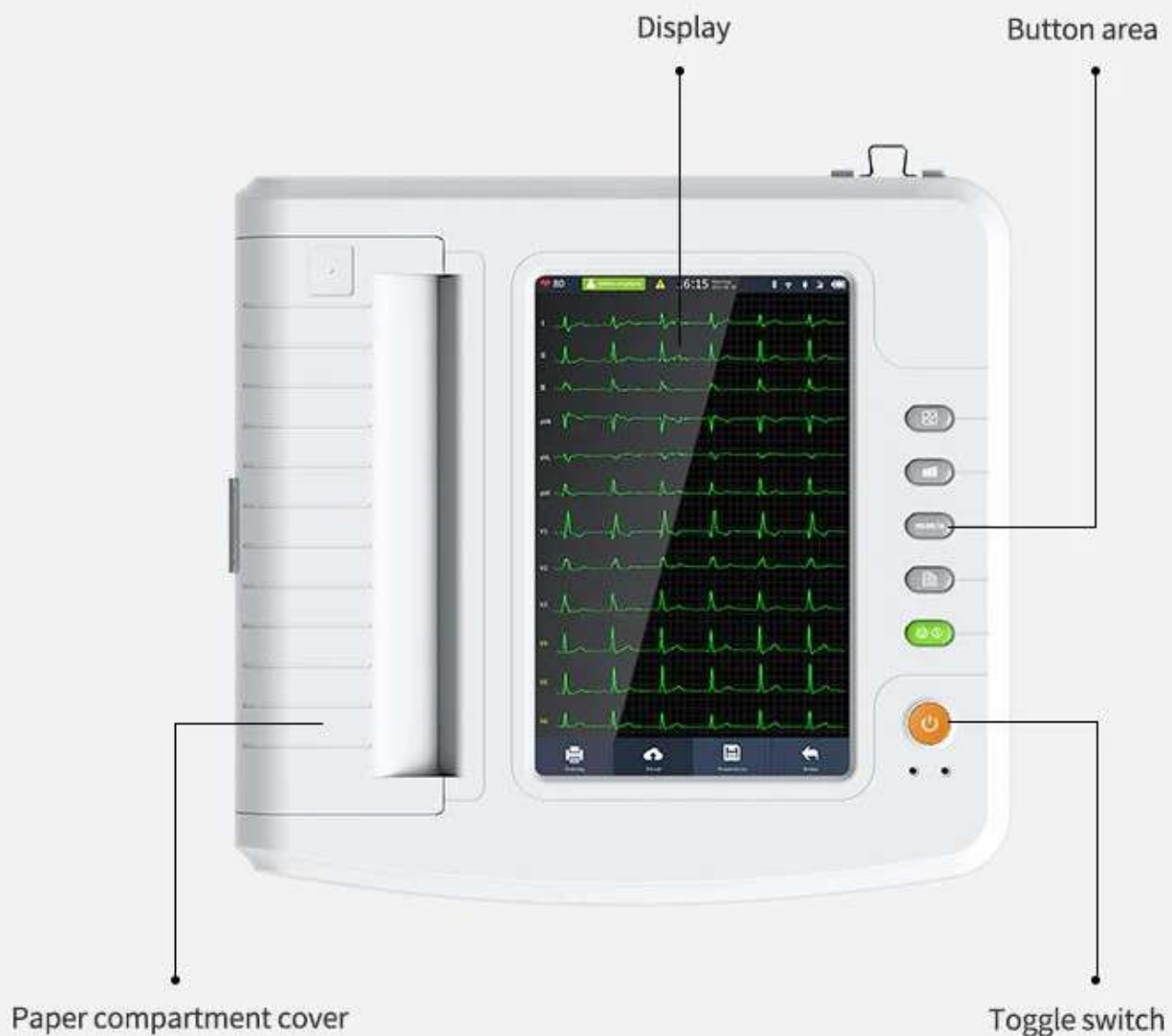
Atrial fibrillation



Use: by processing and analyzing the static ECG data, measurement parameters such as HR of ECG and automatic interpretation items are obtained.

Clinical function: provide measurement parameters such as HR of ECG and automatic interpretation items to assist the physician in diagnosing cardiovascular disease.

1 Front view



Installation

Recording paper

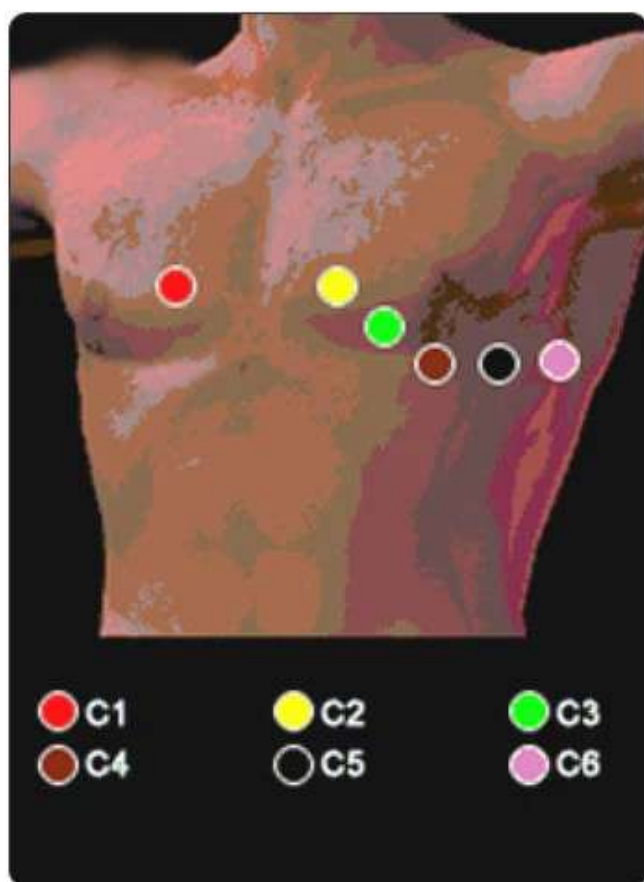
The following thermal recording paper can be applied to the device:

Roll paper: 210 mm(W)×20m(L),

210 mm(W)×30m(L)(optional),

216 mm(W)×20 m(L)(optional)

Folding paper: 210×140-20M(optional)



Chest electrodes

The chest electrodes should be installed to the following parts:

C1(VI): the fourth intercostal space at the right sternal margin

C2(V2): the fourth intercostal space at the left sternal margin

C3(V3): between C2 and C4

C4(V4): the intersection between midclavicular line and the fifth intercostal space

C5(V5): left anterior axillary line on the same plane as C4

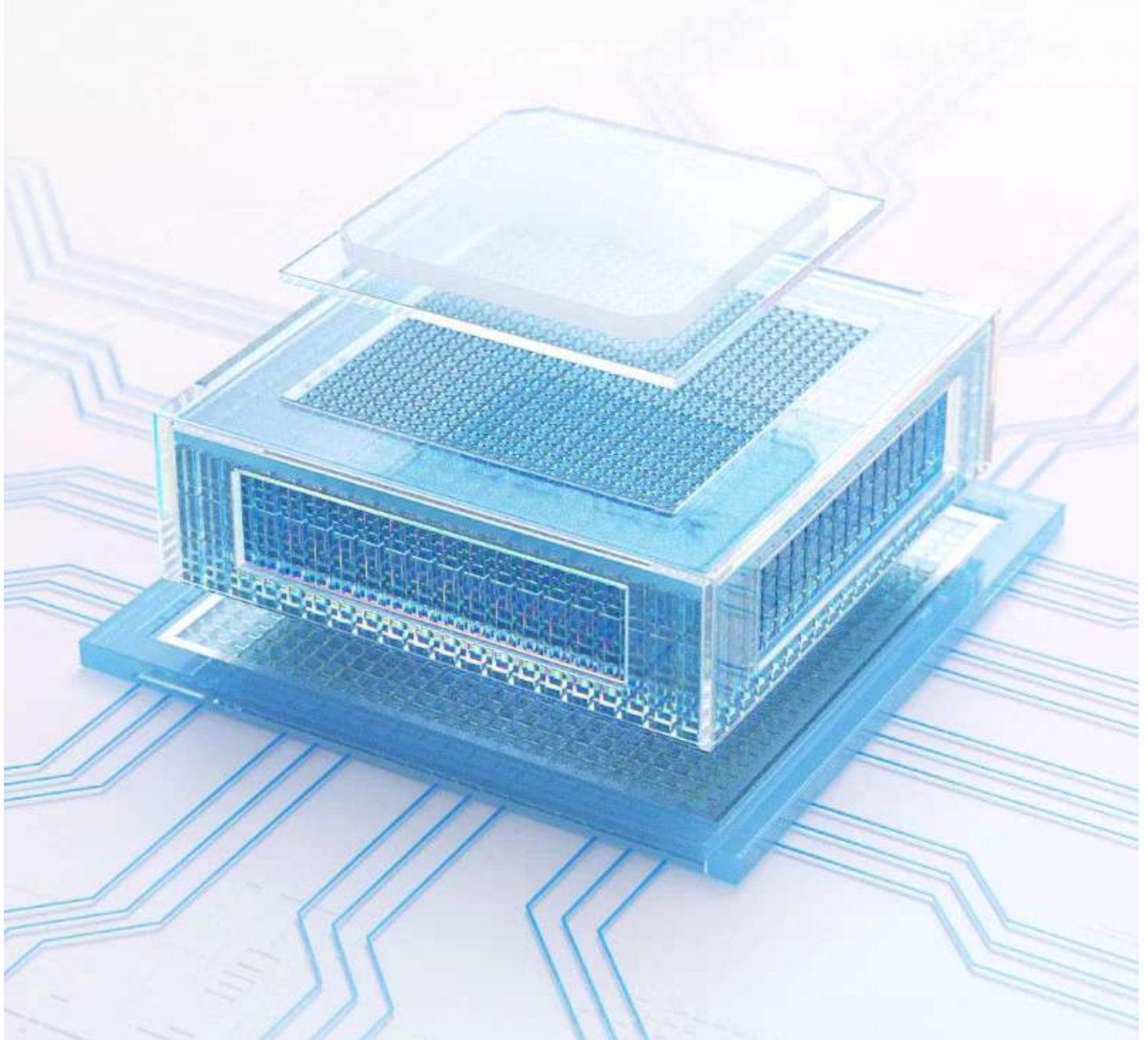
C6(V6): left midaxillary line on the same plane as C4

Clean the chest skin where the electrodes to be installed with alcohol, and apply some conductive pastes to these skin and the edge of the chest electrode suction cup.

Squeeze the suction cup to install the chest electrode at the positions of C1-C6.

Efficient Power Supply

AC / DC (which can adapt AC 50 / 60Hz), In optimal DC state,
up to 10-hour standby time, continuous print for more than 3-hours.



Accessories

Name	Quantity
Electrocardiograph	1 pc
chest electrode	1 set (6 pcs)
limb electrode	1 set (4 pcs)
ECG lead cable	1 pc
earth wire	1 pc
Power cord	1 pc
User manual	1 pc
Recording paper	1 pc

