



sharing the same goal.



**STAINLESS
STEEL FURNITURE**



HIGH QUALITY: TRADITION,



HARD WORK AND RESEARCH

More than forty years in the business, two generations of entrepreneurs, high level specialization in working with stainless steel: AT-OS company represents a solid guarantee for professional service, experience and innovation. A young flexible and dynamic company, AT-OS works with hospitals, elderly homes, clinics, pharmaceutical industries, sanitary structures and from now on with dental surgeries and clinics, too. Realities that require high hygienic standards.

Italian leader and well known on the international markets for specific product ranges, AT-OS manufactures sanitary equipment that demands use of materials of high quality characteristics and modern production technologies and total compliance with rigorous current legislation.

AT-OS has got two production divisions operating in a specific branch:

- ▶ Furniture.
- ▶ Washing and disinfecting machines.

The products illustrated here include:

scrub-up units, CSSD furnishing, surgery ward furnishing, technical furniture for different hospital divisions, in particular emergency wards, endoscope surgeries and community health centers.



SPECIALIST IN DISINFECTION TECHNOLOGY



MATERIAL

- ▶ AISI 304 (1.4301) stainless steel.
- ▶ Scotch Brite brushed finish.

HYGIENE AND CLEANLINESS

Use of high quality stainless steel and a special production technology make cleaning easy and guarantee maintenance of top level hygiene condition.

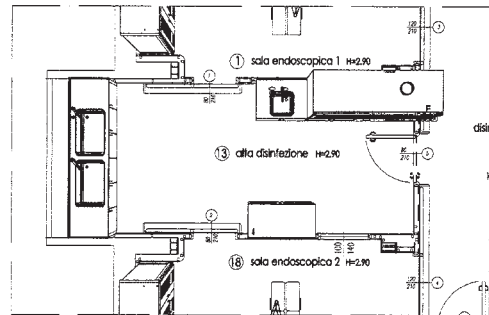
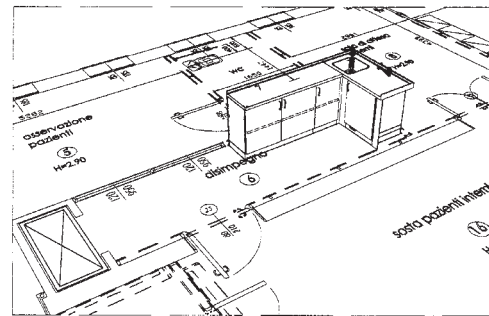
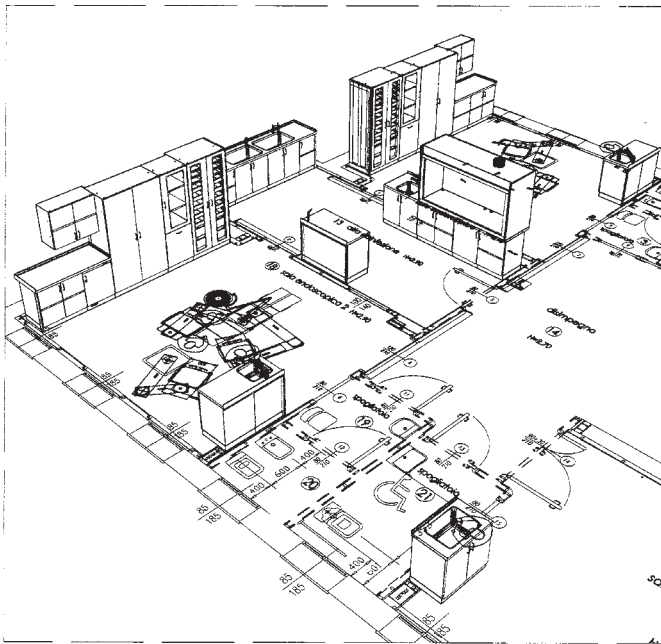
STANDARDS

Choice of components, assembly and finish are performed with care in full compliance with severe European standards regarding sanitary field.

DURATION

All articles have a strong structure. Stainless steel also offers superb long term endurance.

FREE ADVISE FOR CUSTOMIZED AND VERY SPECIALIZED PROJECTS, DEVELOPED IN EVERY DETAIL.



GREAT PHILOSOPHY OF SMALL PARTICULARS

DESIGN

Not only aesthetic: simple and clean design, characterized by great attention to comfort to favor maximum efficiency.

MODULARITY AND EASY INSTALLATION

The division that manufactures modular cabinets offers different solutions to satisfy needs and different customized requirements of customers.

▶ 1-2 REVOLVING DOORS

Veneered double wall doors containing fireproof sound-damping material and silicone edge seal (acid resistant and durable) that guarantees a perfect door seal and valid barrier to dust and dirt. Arch handles measure 10 mm diameter. The adjustable hinges are made of stainless steel in order to permit a better cleaning and are disinfectants resistant. Door open 135° to give maximum access to the interior.

Locks can be installed on request.

▶ 3 DRAWERS

Drawer fronts are made of veneered double-walls containing fireproof sound-damping material, equipped with silicone edge seal for a perfect closure. Sliding guides are noiseless and stop at about 4/5ths of the length of the drawer. Handles, like those of the doors consist of 10 mm diameter arches.

▶ 4 CABINET BODY AND INNER SHELVES

Self-supporting veneered double-wall structure containing fireproof sound-damping material. Inner side walls have special threaded holes to screw in stainless steel shelf supports that carry the shelf. Holes that are not used are closed with screws to prevent dirt from accumulating.

The structure is equipped with an equipotential terminal that grants electric continuity of the cabinet. Shelves can be adjusted at 50 mm centers for the entire height of the cabinet and rest on strong stainless steel shelf supports that are easy to clean.





▶ 5 WORK PLATES

Made of AISI 304 stainless steel sheet 1.2 mm thick, with brushed finish on the upper surfaces. Work plate is mm. 40 thick, with chipboard core and a 0.8 mm stainless steel cover in the inferior part.

▶ 6 EDGES

All closing edges of doors and drawers are welded and brushed to prevent dirt deposits and to eliminate dangerous accidents of personnel.

▶ 7 PAINTING

Both the front of the doors and the drawers can be painted with epoxy paints from the RAL color range.

▶ 8 SOCKLE

Floor cabinets rest on 100 mm high stainless steel sockle containing a height adjustment system or 150 mm.-highadjustable-feet.



CLEANING AREA



The range of AT-OS modular furniture for the cleaning area and gathering of dirty material that must be treated in the CSSD departments, includes various equipment in addition to planning for solution of particular logistic problems.

- ▶ Neutral and ultrasound cleaning unit.
- ▶ Transportation trolleys.
- ▶ Baskets for sterile material.
- ▶ Scrub-up units of different sizes (also customized).
- ▶ Modular shelving.
- ▶ Working tables.





PACKAGING

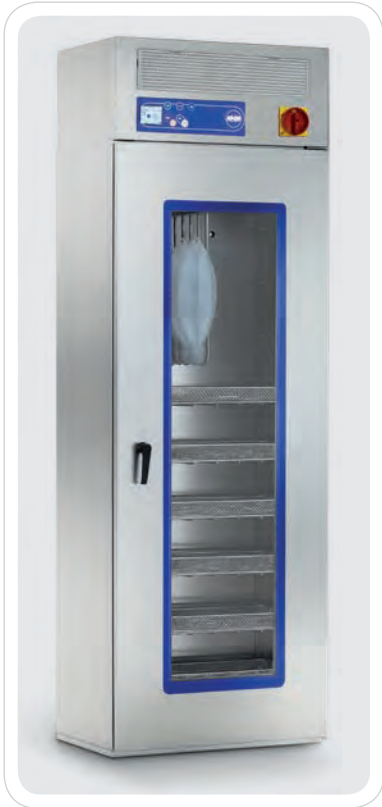


The range of AT-OS modular furniture for the control, packaging and preparation areas of material that has been cleaned and must be sterilized includes:

- ▶ Simple packaging tables or tables with accessories' holder.
- ▶ Work combination units equipped with electric wiring system and compressed air.
- ▶ Storage trolley and paper holders.
- ▶ Accessories: paper holders, cutting devices, baskets for material to be sterilized, containers for different use.
- ▶ Cabinet combinations.
- ▶ Baskets for sterile material.
- ▶ Modular shelving system.



Our production range for the packaging area is oriented to achieve an ergonomic carrying out of packaging operations.

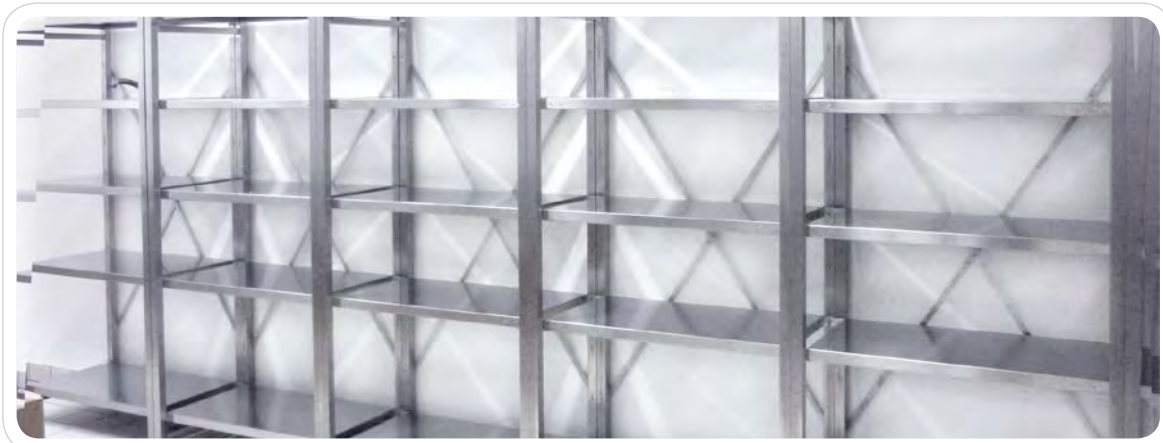


WITHDRAW OF MATERIAL AND STERILE STORAGE AREA



The range of AT-OS modular furniture for the sterile storage area and withdraw of sterilized material includes:

- ▶ Pass-through cabinet units equipped with open/closed electric control device.
- ▶ Transportation trolleys.
- ▶ Baskets for sterile material.
- ▶ Shelving and cabinet combinations for storage of sterilized material, equipped with adjustable shelves.
- ▶ Shelving and cabinet combination of STE range for container storage, equipped with special-to-be-drawn-out-guides in order to make loading and unloading easy.



SCRUB-UP UNITS



Made entirely of AISI 304 stainless steel, 18/10, and Scotch Brite brushed finish. Welding works are polished, smoothed and refined with the original used stainless steel sheet.

Anti-splash -shaped basin with anti-splash guard on 3 sides. It is sound -dampened at the bottom. Stainless steel drain siphon directly welded to the basin not to have holes, and prepared to be connected to the drain trap.

Rear box with flowing top to avoid dust deposits, that contains complete plumbing and electric system to deliver water to the faucet.

Scrub-up units are available as follows:

- ▶ one station - two stations - three stations (length : 600 - 1200 - 1800 mm.);
- ▶ elbow, electric photocell, battery photocell, knee - actuated faucets and mixers, complete with thermostatic pre - mixer for water temperature adjustment;
- ▶ available accessories: detergent and disinfectant dispensers, brush dispensers and hand hot air dryers.

Complete supply of installation accessories and brackets to fix the scrub-up unit to the wall in addition to all electric and hydraulic connections.



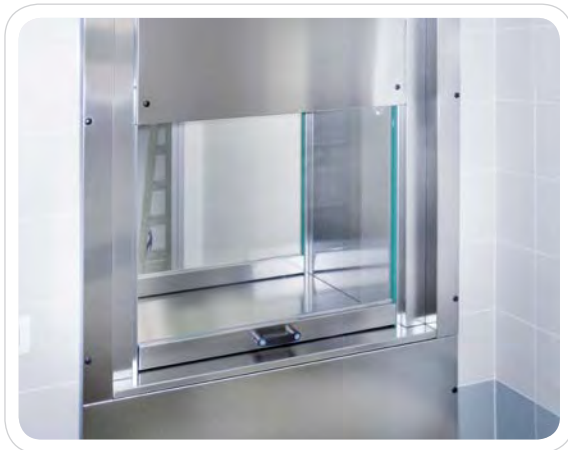
OPERATING THEATRE COMBINATIONS FOR OPERATING THEATRES



Operating theatres are equipped with different technical modular furniture that must comply with quality and extremely high refinement standards. AT-OS offers many solutions and suggestions for every-day activity in the most modern operating theatres thanks to the experience in this field and permanent research of high quality details. The refinement work after installation, is also very important and AT-OS 'specialization guarantees a solution for the most complicated request. Our trained personnel is able to suggest and realize solutions according to customers' needs during furniture installation. The operating theatre furniture range includes:

- ▶ **Pass-through cabinets.**
- ▶ **Instrument storage cabinets to be placed into a niche or equipped with wheels.**
- ▶ **Pass-through box with electronic door interlock device.**
- ▶ **Single or double pass-through windows with electronic interlock device.**
- ▶ **Operating theatre combinations equipped with different elements:**
 - ▶ Catgut container.
 - ▶ Modules closed by normal doors or glass doors.
 - ▶ Modules closed by drawers.
 - ▶ Modules equipped for electric boards, sockets/outlets for medical gas.
 - ▶ Module with negatoscope.
 - ▶ Module with timer, electronic hygrometer and electronic thermometer.





DRESSING TROLLEYS AND ACCESSORIES



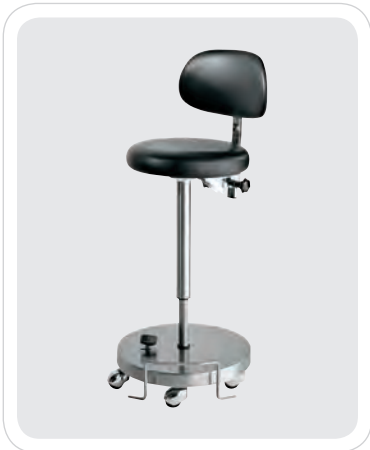
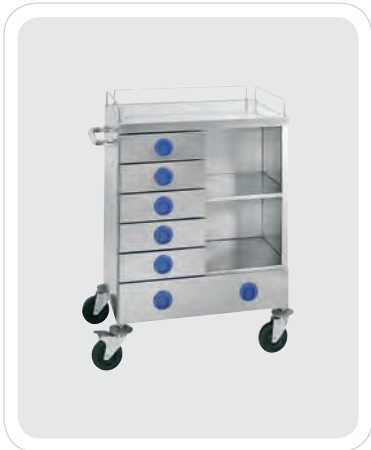
AT-OS offers a trolley production range made of AISI 304 stainless steel, Scotch Brite brushed finish that are designed to guarantee optimal logistic and transport solutions into:

- ▶ Surgery wards.
- ▶ CSSD department.
- ▶ Operating theatre.

Structure of our trolleys is self-load carrying. Trolleys designed in square tubular stainless steel are welded, polished and brushed to obtain a solid structural frame (no risk of screws getting loose) that guarantees duration and no repair service. Also the wheels'connections are welded in order to avoid slackening and problems when using the trolleys.

Wheels used are antistatic





EQUIPPED OPERATING THEATRES



AT-OS production line of high quality and long duration modules is made of AISI 304 stainless steel, with Scotch Brite brushed finish. Front elements can be painted with epoxy paints from the RAL color range. We can manufacture modules of different width, depth and height and equipment adaptable to solve the most difficult problems in hospital field. Some modules have been designed for specific wards:

- ▶ Operating theatres.
- ▶ Neonatology, pathologic neonatology;
- ▶ First aid ward;
- ▶ Endoscope rooms, gastroenterology rooms;





CABINETS FOR ENDOSCOPES



The modules of cabinet combinations are manufactured with inner elements that can be drawn out and equipped with ABS hooks, designed for endoscope storage. These modules are also equipped with drop trays and stops, upon request normal or glass doors can be applied.



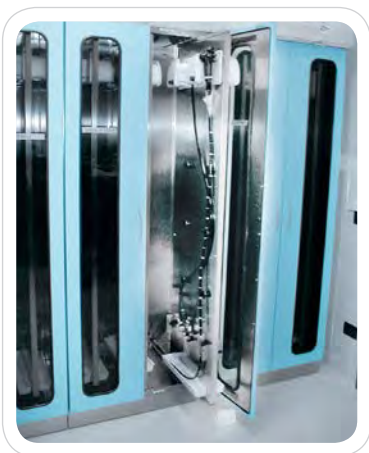
ISO FURNITURE



Cabinets, bases and wall cabinets of ISO SYSTEM are equipped with inner ABS walls with guides, designed for insertion of different accessories with ISO dimension (60x40 cm.) and different height:

- ▶ Wire baskets with dividers.
- ▶ ABS basins with dividers.

Operating theatres can also be equipped with medicine fridges and other equipment in harmony with the modules' combination.





CSSD

SLUICE ROOM

SERVICES

OP ROOM

AT-OS
DISINFECTION TECHNOLOGY

AT-OS Srl

Viale del Lavoro, 19 - 37030 Colognola ai Colli - Verona - ITALY

Tel (+39) 045 6159411 - Fax (+39) 045 6159422

info@at-os.com | www.at-os.com

