



HEINE Otoscopes



BETA400 F.O. BETA200 F.O. K 180 F.O. mini3000 F.O. BETA 100 K 100 mini3000

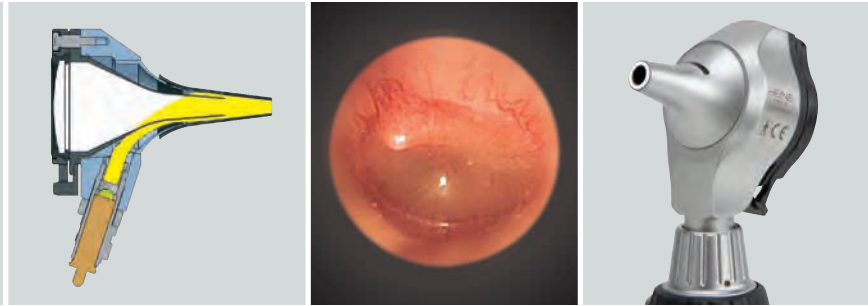
	BETA400 F.O.	BETA200 F.O.	K 180 F.O.	mini3000 F.O.	BETA 100	K 100	mini3000
Housing construction							
Metal	<input type="checkbox"/>	<input type="checkbox"/>			<input type="checkbox"/>		
Polycarbonate			<input type="checkbox"/>	<input type="checkbox"/>		<input type="checkbox"/>	<input type="checkbox"/>
Viewing window							
Glass	<input type="checkbox"/>	<input type="checkbox"/>			<input type="checkbox"/>		
Acrylic			<input type="checkbox"/>	<input type="checkbox"/>		<input type="checkbox"/>	<input type="checkbox"/>
3x magnification		<input type="checkbox"/>	<input type="checkbox"/>	<input type="checkbox"/>	<input type="checkbox"/>	<input type="checkbox"/>	<input type="checkbox"/>
4.2x magnification	<input type="checkbox"/>						
Illumination							
LED F.O. illumination	<input type="checkbox"/>	<input type="checkbox"/>		<input type="checkbox"/>			
XHL F.O. illumination	<input type="checkbox"/>	<input type="checkbox"/>	<input type="checkbox"/>	<input type="checkbox"/>			
XHL Direct illumination					<input type="checkbox"/>	<input type="checkbox"/>	<input type="checkbox"/>
Instrument size							
Professional	<input type="checkbox"/>	<input type="checkbox"/>	<input type="checkbox"/>		<input type="checkbox"/>	<input type="checkbox"/>	
Compact				<input type="checkbox"/>			<input type="checkbox"/>
Available power sources							
Battery 2.5V	<input type="checkbox"/>	<input type="checkbox"/>	<input type="checkbox"/>	<input type="checkbox"/>	<input type="checkbox"/>	<input type="checkbox"/>	<input type="checkbox"/>
Rechargeable battery 2.5V				<input type="checkbox"/>			<input type="checkbox"/>
Rechargeable battery 3.5V	<input type="checkbox"/>	<input type="checkbox"/>	<input type="checkbox"/>		<input type="checkbox"/>	<input type="checkbox"/>	
Tips							
Reusable tips	<input type="checkbox"/>	<input type="checkbox"/>	<input type="checkbox"/>	<input type="checkbox"/>			<input type="checkbox"/>
Reusable specula					<input type="checkbox"/>	<input type="checkbox"/>	
AllSpec disposable tips	<input type="checkbox"/>	<input type="checkbox"/>	<input type="checkbox"/>	<input type="checkbox"/>	<input type="checkbox"/>	<input type="checkbox"/>	<input type="checkbox"/>
UniSpec disposable specula					<input type="checkbox"/>	<input type="checkbox"/>	
Tip adaptor					<input type="checkbox"/>	<input type="checkbox"/>	
Insufflation bulb							
Insufflation port	<input type="checkbox"/>	<input type="checkbox"/>	<input type="checkbox"/>	<input type="checkbox"/>	<input type="checkbox"/>	<input type="checkbox"/>	
Page	007 / 008	009	011	012 / 014	017	019	020

* with Tip adaptor

** Optional insufflation port connector available



High-quality Fiber Optics (F.O.) provide a homogeneous, reflex-free illumination.



HEINE BETA® 400 LED F.O. Otoscope

4.2x magnification with LED^{HQ} illumination

LED^{HQ}
LED NOW IN HEINE QUALITY.



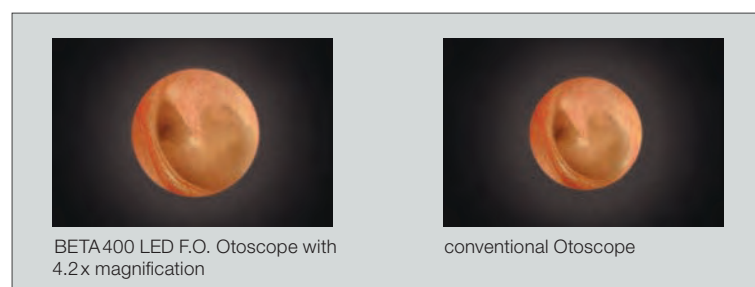
The otoscope has been designed with an all metal housing and scratch resistant glass lenses which guarantee a lifetime of maintenance-free use. LED with virtually unlimited hours of working life (typ. 100,000 hours). No need to ever replace bulbs. Maintenance-free for a lifetime.

- ⌘ **Exclusive 4.2x magnification.** More detail of anatomical structures and easy recognition of foreign bodies.
- ⌘ **Exceptional depth of field.** Provides sharp spatial images in a convenient working range.
- ⌘ **Large field of view.** Gives the necessary overview and perfect orientation during examinations.
- ⌘ **Multi-coated precision optics.** Offer high resolution and distortion free images.
- ⌘ **Fiber Optic Illumination.** Ensures homogeneous, very bright illumination and an unobstructed view of the ear canal and tympanum.
- ⌘ **LED in HQ:** The new standard in LED illumination defining optimal light intensity, homogeneity and colour rendering for the most accurate diagnosis. Red is red, blue is blue. Colour temperature: typ. 3,500K, Colour Rendering Index (CRI) >97, special index for red colours (R9) >93.
- ⌘ **Special optical interface to precisely integrate the LED illumination with the optical system** to ensure bright (typ. 77,000 lux with tip), homogeneous light during examinations.
- ⌘ **Exclusive continuous brightness control** between 100% and 3% (patent pending) with one-finger operation.
- ⌘ **One hand operation.** The unique patented design allows the permanently attached optical system to be flipped open and out of the way, enabling instrumentation and ease of cleaning.
- ⌘ **Integrated insufflation port** offers tympanic mobility testing without air leakage.
- ⌘ **Full functionality of the BETA400 LED is guaranteed with BETA Rechargeable Handles and the EN 100/EN 200 Wall Transformers.**

EXCLUSIVELY AT HEINE

- 4,2x Magnification
- LED in HQ with continuous brightness control
- All-metal housing

BETA400 LED F.O. Otoscope	LED
with 4 reusable tips, without handle	B-008.11.401
same, without tips, without handle	B-008.11.400





HEINE BETA® 400 F.O. Otoscope

4.2x magnification with XHL illumination



BETA400 F.O. Otoscope with XHL Xenon Halogen illumination instead of LED illumination. Other technical specifications the same as the BETA400 LED F.O. Otoscope.

• **XHL Xenon Halogen bulb** with bright illumination and authentic colour rendering.

BETA400 F.O. Otoscope	2.5V XHL	3.5V XHL
with 4 reusable tips, without handle	B-001.11.401	B-002.11.401
same, without tips, without handle	B-001.11.400	B-002.11.400
XHL Xenon Halogen spare bulb	X-001.88.077	X-002.88.078

HEINE BETA® 400 F.O. ENT Diagnostic Sets

▶ with XHL or LED^{HO} illumination



Set complete with: **BETA400 F.O. Otoscope in XHL or LED**

- 1 set (4 pcs.) of reusable tips (B-000.11.111)
- 5 of both AllSpec disposable tips 2.5 and 4 mm Ø
- spare bulb for XHL version
- hard case

BETA 400 F.O. Otoscope Sets	2.5V XHL	3.5V XHL	LED
BETA battery handle	B-143.10.118		
BETA4 USB rechargeable handle with USB cord and plug-in power supply		B-143.27.388	B-143.28.388
BETA4 USB rechargeable handle		B-143.27.387	B-143.28.387
BETA4 NT rechargeable handle with NT 4 table charger		B-143.23.420	B-143.24.420

HEINE BETA® 400 F.O. Diagnostic Sets

▶ with XHL or LED^{HO} illumination



Set complete with: **BETA400 F.O. Otoscope, BETA200 Ophthalmoscope both in XHL or LED,**

- 1 set (4 pcs.) of reusable tips (B-000.11.111)
- 5 of both AllSpec disposable tips 2.5 and 4 mm Ø
- one spare bulb each for XHL version
- hard case

BETA 400 F.O. Otoscope Sets	2.5V XHL	3.5V XHL	LED
BETA battery handle	A-153.10.118		
BETA4 USB rechargeable handle with USB cord and plug-in power supply		A-153.27.388	A-153.28.388
BETA4 USB rechargeable handle		A-153.27.387	A-153.28.387
BETA4 NT rechargeable handle with NT 4 table charger		A-153.23.420	A-153.24.420

HEINE BETA® 200 LED F.O. Otoscope

Sharpest images, perfect colour rendering and brightness in LED^{HQ}



The otoscope has been designed with an all metal housing and scratch resistant glass lenses which guarantee a lifetime of maintenance-free use. LED with virtually unlimited hours of working life (typ. 100,000 hours). No need to ever replace bulbs. Maintenance-free for a lifetime.

- ⋮ **3x magnification.** The multi-coated glass viewing window offers high resolution and distortion-free images.
- ⋮ **Fiber Optic Illumination.** Ensures homogeneous, very bright illumination and an unobstructed view of the ear canal and tympanum.
- ⋮ **LED in HQ:** The new standard in LED illumination defining optimal light intensity, homogeneity and colour rendering for the most accurate diagnosis. Red is red, blue is blue. Colour temperature: typ. 3,500K, Colour Rendering Index (CRI) >97, special index for red colours (R9) >93.
- ⋮ **Special optical interface to precisely integrate the LED illumination with the optical system** to ensure bright (typ. 77,000 lux with tip), homogeneous light during examinations.
- ⋮ **Exclusive continuous brightness control** between 100% and 3% (patent pending) with one-finger operation.
- ⋮ **Viewing window is permanently attached,** and swivels for instrument use and complete cleaning of the instrument head.
- ⋮ **Integrated insufflation port** offers tympanic mobility testing without air leakage.
- ⋮ **Full functionality of the BETA200 LED is guaranteed with BETA Rechargeable Handles and the EN100/EN200 Wall Transformers.**

- EXCLUSIVELY AT HEINE**
- 3x Magnification
 - LED in HQ with continuous brightness control
 - All-metal housing

BETA200 LED F.O. Otoscope	LED
with 4 reusable tips, without handle	B-008.11.501
same, without tips, without handle	B-008.11.500

HEINE BETA® 200 F.O. Otoscope

Sharpest images, perfect colour rendering and brightness in XHL



BETA200 F.O. Otoscope with XHL Xenon Halogen illumination instead of LED illumination. Other technical specifications the same as the BETA200 LED F.O. Otoscope.

- ⋮ **XHL Xenon Halogen bulb** with bright illumination and authentic colour rendering.

BETA200 F.O. Otoscope	2.5V XHL	3.5V XHL
with 4 reusable tips, without handle	B-001.11.501	B-002.11.501
same, without tips, without handle	B-001.11.500	B-002.11.500

XHL Xenon Halogen spare bulb	X-001.88.077	X-002.88.078
------------------------------	---------------------	---------------------



HEINE BETA® 200 F.O. ENT Diagnostic Sets

 with XHL or LED^{HO} illumination



Set complete with: **BETA 200 F.O. Otoscope in XHL or LED**

1 set (4 pcs.) of reusable tips (B-000.11.111)
5 of both AllSpec disposable tips 2.5 and 4 mm Ø
spare bulb for XHL version
hard case

BETA 200 F.O. Otoscope Sets	2.5V XHL	3.5V XHL	LED
BETA battery handle	B-141.10.118		
BETA 4 USB rechargeable handle with USB cord and plug-in power supply		B-141.27.388	B-141.28.388
BETA 4 USB rechargeable handle		B-141.27.387	B-141.28.387
BETA 4 NT rechargeable handle with NT 4 table charger		B-141.23.420	B-141.24.420

HEINE BETA® 200 F.O. Diagnostic Sets

 with XHL or LED^{HO} illumination



Set complete with: **BETA 200 Ophthalmoscope, BETA 200 F.O. Otoscope both with XHL or LED,**

1 set (4 pcs.) of reusable tips (B-000.11.111)
5 of both AllSpec disposable tips 2.5 and 4 mm Ø
one spare bulb each for XHL version
hard case

BETA 200 F.O. Diagnostic Sets	2.5V XHL	3.5V XHL	LED
BETA battery handle	A-132.10.118		
BETA 4 USB rechargeable handle with USB cord and plug-in power supply		A-132.27.388	A-132.28.388
BETA 4 USB rechargeable handle		A-132.27.387	A-132.28.387
BETA 4 NT rechargeable handle with NT 4 table charger		A-132.23.420	A-132.24.420