



PROFESSIONAL MEDICAL PRODUCTS

Gima S.p.A. - Via Marconi, 1 - 20060 Gessate (MI) Italy  
Italia: tel. 199 400 401 - fax 199 400 403  
Export: tel. +39 02 953854209/221/225 - fax +39 02 95380056  
gima@gimaitaly.com - export@gimaitaly.com  
[www.gimaitaly.com](http://www.gimaitaly.com)

# **PETTINE ELETTRICO ANTI PIDOCCHI ELECTRIC LICE COMB PEIGNE ÉLECTRIQUE ANTI-POUX PEINE ANTIPIOJO ELÉCTRICO**

**Manuale utente - User manual  
Notice d'utilisation - Manual del usuario**



**ATTENZIONE:** Gli operatori devono leggere e capire completamente questo manuale prima di utilizzare il prodotto.

**ATTENTION:** The operators must carefully read and completely understand the present manual before using the product.

**AVIS:** Les opérateurs doivent lire et bien comprendre ce manuel avant d'utiliser le produit.

**ATENCIÓN:** Los operadores tienen que leer y entender completamente este manual antes de utilizar el producto.



Fabbricante/Manufacturer:  
Gima S.p.A  
20060 Gessate (MI) - Italy  
Made in P.R.C.



EMC DIRECTIVE



## ***Table of contents***

|  |    |
|--|----|
| Introduction.....  | 10 |
| Safety instruction.....  | 10 |
| Special features.....  | 11 |
| Description of the appliance and the supplied accessories..... | 11 |
| Installation of the batteries.....                             | 12 |
| Cleaning and maintenance.....                                  | 12 |
| Specifications.....  | 12 |
| Operation.....   | 13 |
| GIMA warranty conditions.....                                  | 14 |

## **INTRODUCTION**

Head lice are tiny, wingless insects. When fully grown, they're similar in size to a sesame seed. Because they can't survive the cold, they cling to our hair, keeping close to the warmth of our heads.

Head lice are harmless – though they can cause your child's head to itch. Head lice have been making a nuisance of themselves for thousands of years. Fortunately, getting rid of them nowadays only takes a ten minute treatment time!

The Gima electric lice comb is one viable option to consider in the quest of eradicating head lice so they will stop spreading through your family member's hair and scalp. It is certainly no secret that an infestation of lice can make life difficult for everyone in the household, but thanks to modern technology – an electric lice comb, the process of getting rid of these pests can be just a bit easier.

## **SAFETY INSTRUCTION**

For your safety, it is recommended that you read this User Guide very carefully, and comply with the following instruction.

- Use the appliance only as intended in accordance with the instructions provided in this guide.
- This electric device is not a toy, avoid the reach of children.
- The child who is under the age of 3, is not suited for this appliance.
- Children should be supervised by an adult while using this electric device.
- Consult the physician before using the unit, if you have a pace maker, artificial limbs or any electronic implant.
- Do not operate this unit close to a mobile telephone, a microwave oven, or a television set (away more than 1 meter).
- The persons who suffer from epilepsy or heart disease are not recommended to use this appliance.
- Do not use this unit on moisten hair or any undo knots or braids.
- Avoid the wounded, cracked or dry skin, or direct contact with your ears, eyes and mouth.
- Avoid the direct exposure of sunlight, and upon any hot surface.
- Keep the unit away from moisture, or any liquid.
- Do not use the unit, if the housing or comb is damaged, if the unit does not function properly or if it has been immersed in liquid.
- Prevent accident or damage to the unit by keeping the unit away from clothing, bristles, wires, strings, shoelaces, threads etc.

- Always switch off the unit when not in use.
- Remove the battery if the appliance is not to be used for an extended period.

## **SPECIAL FEATURES**

Gima lice comb does not only dispel but also efficiently kill the existing head lice and nits with a quickly increasing electrical voltage of 130-180 Volts, which is imperceptible and harmless to humans.

Comb activity is indicated by an audible signal, which provides different sounds: one sound per three seconds indicates the functional unit (60-90V); the short, sharp buzzer 1 second sound per 0.5 second indicates the contact with the intruder (130-180V).

Incomparable brilliant indicator setting in the On/Off switch button: different level of scintillations for distinguishing the functional and low battery. Automatic switch off function.

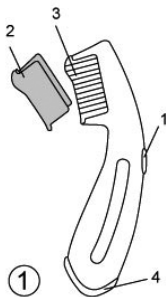
The comb will switch off automatically without any operation after 5 minutes for extending the battery life.

Low battery indication: the unit will detect the battery if the voltage is lower than normal working voltage, LED indicator will glitter twice briefly, once longer; the buzzer will sound continuously for 30 seconds till switching off automatically.

Impeccable design for containing the accessories inside the main appliance, portable and suitable for travel, without the trouble of missing the supplied accessories.

## **DESCRIPTION OF THE APPLIANCE AND THE SUPPLIED ACCESSORIES**

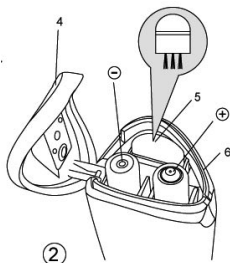
1. On/Off switch (press button)
2. Protective cover
3. Electric comb
4. Lid of the battery compartment
5. Cleaning brush
6. Battery compartment



## INSTALLATION OF THE BATTERIES

Open the lid protecting the battery by lifting the point “4”, the lid connects the housing with one part to avoid the concern of missing the lid. Insert two AAA batteries, observe the proper polarity (+/-) of the batteries and on the battery compartment.

A polarity error can damage your appliance and compromise the guarantee.



## CLEANING AND MAINTENANCE

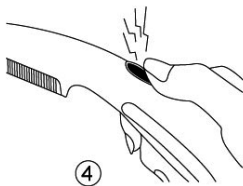
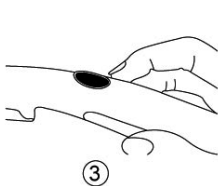
1. Remove the batteries before cleaning the appliance.
2. Avoid using any liquid or strong detergents to scrub the unit.
3. For the housing, use a dry, soft paper or fabric cloth to clean. For the teeth, use the accessory of cleaning brush to remove the clogs.
4. Make sure no water gets into the unit while cleaning and never immerse the unit in water.
5. The storage should be in a clean, dry and cool, ventilated location.
6. Direct exposure to sunlight will damage the unit.

## SPECIFICATIONS

|                 |                               |
|-----------------|-------------------------------|
| Model name      | 24402                         |
| Power supply    | AAA battery x 2               |
| Standby Current | $\geq 30\mu\text{A}$          |
| Full current    | $\geq 30\text{mA}$            |
| Export Voltage  | 30 ~ 180 V                    |
| Consumption     | $\geq 35\text{mA}$ during use |
| Battery life    | Eight hours in continuous use |
| Auto switch off | Yes                           |
| Dimension       | 177 x 34 x 39 mm              |
| Weight          | 200g                          |
| Certificate     | CE, RoHS                      |

## OPERATION

1. Press the On/Off switch button "1", maintain it for two seconds for operating the appliance. LED indicator will light on, the buzzer will hum three seconds long to indicate the operation.
2. Use the appliance as a normal comb. Make sure to use the unit on dry hair. Undo the knots or braids before using the unit.
3. While operating the unit, LED will light on and also the buzzer will sound once every three seconds.
4. The buzzer will turn into a short and quick humming sound, the LED indicator flashes quickly while the teeth contact with a louse or egg.
  - 4-1 The voltage of the teeth will extinguish the intruder.
  - 4-2 Make sure to thoroughly clean the comb with the cleaning brush after every usage to re-operate the comb continually.
5. After every usage, remember to switch off the unit and thoroughly clean the comb with cleaning brush, keep the protective cap "2" back on the unit during storage.





**Disposal:** *The product must not be disposed of along with other domestic waste. The users must dispose of this equipment by bringing it to a specific recycling point for electric and electronic equipment. For further information on recycling points contact the local authorities, the local recycling center or the shop where the product was purchased. If the equipment is not disposed of correctly, fines or penalties may be applied in accordance with the national legislation and regulations.*

## **GIMA WARRANTY CONDITIONS**

Congratulations for purchasing a GIMA product. This product meets high qualitative standards both as regards the material and the production. The warranty is valid for 12 months from the date of supply of GIMA. During the period of validity of the warranty, GIMA will repair and/or replace free of charge all the defected parts due to production reasons. Labor costs and personnel traveling expenses and packaging not included. All components subject to wear are not included in the warranty. The repair or replacement performed during the warranty period shall not extend the warranty. The warranty is void in the following cases: repairs performed by unauthorized personnel or with non-original spare parts, defects caused by negligence or incorrect use. GIMA cannot be held responsible for malfunctioning on electronic devices or software due to outside agents such as: voltage changes, electro-magnetic fields, radio interferences, etc. The warranty is void if the above regulations are not observed and if the serial code (if available) has been removed, cancelled or changed. The defected products must be returned only to the dealer the product was purchased from. Products sent to GIMA will be rejected.