

# ***ECO 3 EXPERT***

Black & White with Doppler,  
Stunningly Good.



WWW.CHISON.COM

**CHISON**  
Value Beyond Imaging



# Advanced Imaging Technologies

## ECHO

- Advanced technologies:
  - i-Image(Intelligent image optimization)
  - THI(Tissue Harmonic Image)
  - SRA(Speckle Reduction Algorithm)
  - Compound imaging
- Full digital beam-former
- Trapezoid
- Automatic PW trace
- Chroma
- Full screen display mode
- AIO(Automatic image optimization)



## Ergonomics

- Rotatable LED (0~30°): tailor to different viewing angles
- Ultra-compact & Ultra-light
- Easy to carry
- Keyboard: For easy and quick access
- Dedicated cart TR 9000
- Streamlined workflow

## ECO-friendly

- Less radiation
- Less power consumption
- Longer usage life:LED
- Longer battery standby time:>2 hours

## Economic

- The latest platform & more advanced chip-set:brings you better image quality and features at less cost in a more compact box
- Support PC printer, reduce investment & day to day paper cost
- 8G memory card
- 500G hard disk (option)
- Vehicular Charging



- Full Screen display mode



Ultra-compact



Carrying (BG-100)



Dual probe-connectors



Chargeable from your car

**Excellent PW** resolution and automatic PW trace measurement will greatly improve the diagnosis confidence by delivering both qualitative & quantitative information.



Streamlined workflow, Easy diagnosis!

ONLY **6** STEPS!!



**1. ONE KEY** to select the desired application with automatic preset



**2. ONE KEY** to optimize the image automatically.  
AIO(Automatic image optimization)



**3. ONE KEY** to save still image and cine



**4. ONE KEY** to measure



**5. ONE KEY** to generate report



**6. ONE KEY** to print by PC or video printer (see page 4 option)



Liver,B Mode



Kidney,B Mode



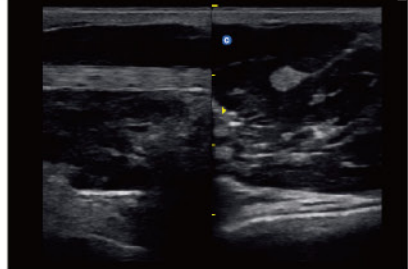
fetal harnpan,B Mode



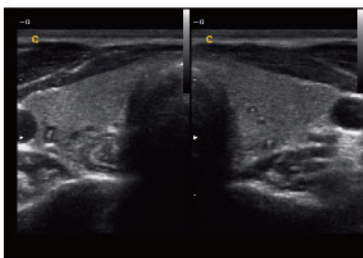
Fetal spine,B Mode



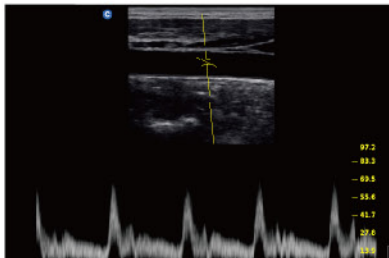
Uterus,B Mode



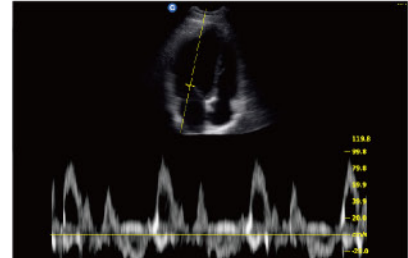
MSK,2B Mode



Thyroid,2B Mode



Carotid,PW Mode



Cardiac,PW Mode

# Specification

Applications	Abdomen,OB/GYN,Vascular, Small parts(breast, testes, thyroid),Musculoskeletal Conventional & Superficial, Pediatric, Basic Cardiac
Imaging technologies	i-Image,SRA,Compound imaging,THI
Display Modes	B, B/B, 4B, M, B/M,PW
Gray Scale	256 Levels
Probe Frequency	2.5 MHz - 11.0 MHz (Depend on the probe)
Cine Loop	256 frames
Zoom	PIP zoom & pan zoom
Software Packages	Dedicated measurement package: General, OB/GYN, URO, Cardiac, vascular, small parts
Archives Management	Patient information management, images record, exam report.
Power Supply	AC 100V-240V, 50Hz- 60Hz
Option	DICOM 3.0, Water-proof keyboard cover, Carrying Case (BG-100 ),Cart TR 9000 Support PC Printer* ,Video Printer



2.5MHz-5.0MHz Convex  
C3-A



5.3MHz-10.0MHz Linear  
L7M-A



5.3MHz-11.0MHz Linear  
L7S-A



2.5MHz-5.0MHz Micro-Convex  
MC3-A



4.0MHz-8.0MHz Transvaginal  
V6-A



4.5MHz-8.0MHz Micro-Convex  
MC6-A



5.0MHz-10.0MHz Trans-Rectal  
R7-A

## CHISON Medical Technologies Co., Ltd.

### Sales & Service Contact Address:

No.9, Xinhuihuan Road, Xinwu District, Wuxi, Jiangsu, China 214028

**TEL :** 0086-510-85310593 / 85310937

**FAX :** 0086-510-85310726

**EMAIL :** export@chison.com.cn

We reserve the right to make changes to this catalogue without prior notice.  
Please contact us or your local dealer for the latest information.

\* Please refer to the user manual for details

ECO3 EXPERT-161101