

► SPACE SAVING MINIATURE SKELETON MODELS

Shorty the Mini Skeleton

- Top of the range miniature human skeleton models
- 3-part removable skull (skullcap, base of skull, mandible)
- Removable arms and legs
- Specially mounted hip joints to demonstrate natural rotation of the hips
- Made from durable, unbreakable plastic, hand assembled
- Can be taken off of the base when required

A. Shorty the Mini Skeleton, Pelvic Mounted

88 cm, 1.5 kg

M-1000039

Shorty the Mini Skeleton, Hanging Stand (not shown)

On hanging stand that can be placed on the floor or hung on the wall. 94 cm; 1.5 kg

M-1000040

B. Shorty with Painted Muscles, Pelvic Mounted

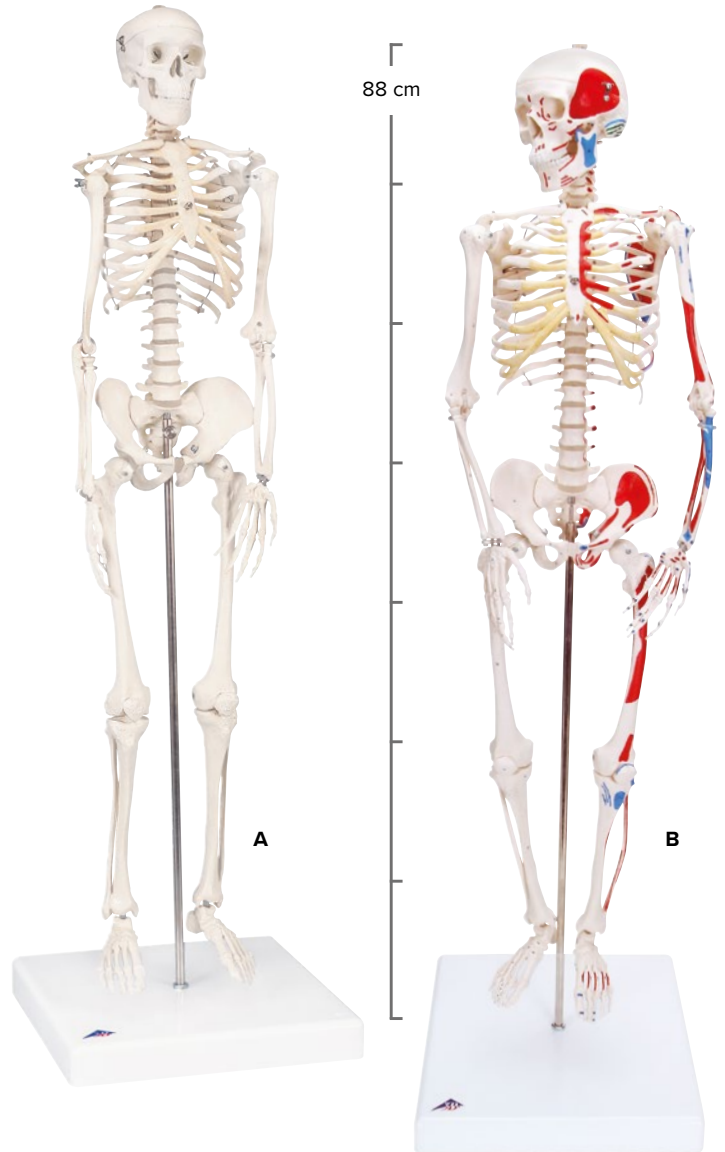
Muscle origins (red) and insertions (blue) on the left half. 88 cm; 1.7 kg

M-1000044

Shorty with Painted Muscles, Hanging Stand (not shown)

On hanging stand that can be placed on the floor or hung on the wall. 94 cm; 1.7 kg

M-1000045



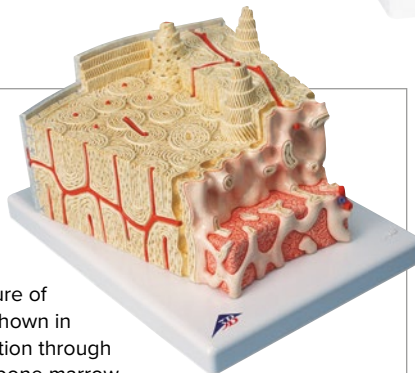
Mini Skeletons: Incredible detail and fully articulating joints!

MICROanatomy™ Bone Structure Model, enlarged 80 times

This model depicts a section of lamellar bone, showing the typical structure of tubular bone. Planes are shown in cross and longitudinal section through all levels of the bone and bone marrow. Typical elements are easily identified and help in understanding the structure and function of the Haversian systems. This representation graphically illustrates the individual bone components including spongy and compact substance, endosteum, cortical substance, osteocytes, Volkmann and Haversian canals.

26 x 19 x 14.5 cm; 0.8 kg

M-1000154



Cancellous Bone

The model shows the spongy bone inside the bone. Its filigree architecture is determined by influences such as pressure, bending and torsion. Using innovative micro CT technology, we have managed to reconstruct an exact 3-dimensional copy of a piece of cancellous bone from an original and enlarge it 100 times.

17 x 17 x 23 cm; 0.29 kg

M-1009698

