

## Products


[Back to Catalog](#)

Double heads series



## Double Head Probe Type Wireless Mini Ultrasounder

Product Origin: [Guangzhou China]

Applications:



*New Generation Medical Tool  
A good tool for doctors*

## You are my eyes

From now on say goodbye to the interventional treatment of blind insertion & blind penetration and the diagnosis only by looking, hearing & asking

Consist by two head(can select convex, linear, microconvex, transvaginal), suit for more application same time. And lower cost than buy two probe that only one head.  
Middel key: One second click for freeze, 3 second click for change work head, 5 second click for power off.



### How it works

The SonoStar wireless probe is a mini ultrasound scanner without a screen. We minimize the components of a traditional ultrasound into a small circuit board built into the probe, and showing image in smart phone/tablet through Wifi transferring. Image can both show in screen and tablet. Image transferring through internal wifi from probe, no need external Wifi signal.



### Feature

- Small and Compact size, easy to carry.
- Wireless type without probe cable, working freely.
- Waterproof design, convenient for sterilization.

## Pocket Ultrasound

The Ultrasound Scanner in your pocket, light weight, small, portable, easy & convenient to use, take it with you when you go out for an emergency.



## Similar size as mobile phone

One device with multi-function, any combination of different type Ultrasound Probes ; Portable operation, saves your time and money.



iPhone APP



iPad APP



Android APP



Windows APP

### Specification

- Probe Type: Consist by two of Convex, Microconvex, Linear, Small Linear, Transvaginal
- Scanning mode: Electronic array
- Display mode: B, B/M, color doppler version with B+Color, B+PDI, B+PW
- Probe element: 128/192
- Channel of RF circuit board: 32/64
- Probe frequency and scan depth, head radius/width, scan angle(convex):  
Convex head 3.5MHz/5MHz, 90°/160°/220°/305mm, 60mm, 60°  
Convex head with phased array(cardiac) scan mode: 3.5MHz/5MHz, 90°/160°/220°/305mm, 40mm, 90°  
Linear head 7.5MHz/10MHz, 20°/40°/60°/100mm, 40mm  
Small Linear head 10MHz/14MHz, 20°/30°/40°/55mm, 25mm  
Microconvex head 3.5MHz/5MHz, 90°/130°/160°/200mm, 20mm, 88°  
Transvaginal head 6.5MHz/8MHz, 40°/60°/80°/100mm, 13mm, 149°
- Image Adjust: BGain, TGC, DYN, Focus, Depth, Harmonic, Denoise, Color Gain, Steer, PRF
- Cineplay: auto and manual, frames can set as 100/200/500/1000
- Puncture assist function: the function of in-plane puncture guide line, out-of-plane puncture guide line, automatic blood vessel measurement.
- Measure: Length, Area, Angle, heart rate, Obstetrics
- Image save: jpg, avi and DICOM format
- Image frame rate: 18 frames/second
- Battery working time: 2.5 hours(according to whether keep scan)
- Battery charge: by USB charge or wireless charge, take 2 hours
- Dimension: L156\*W60\*H20mm(if with transvaginal head length is 270mm)
- Weight: 250g
- Wifi type: 802.11g/20MHz/5G/450Mbps
- Working system: Apple IOS and Android, Windows

### Product Configuration

**Standard Configuration :** Wireless Ultrasound Scanner x 1 unit, USB Charging Cable x 1pc, Carrying Bag or Aluminium Sultcase(options) x 1pc.

**Optional :** Stainless Steel Puncture Guide, Android or IOS Phone/Tablet, Windows PC, Wireless Power Bank, Tablet Bracket, Trolley



### Clinical value

Precision medical visualization tool, first aid quick examination, basic examination, wireless ultrasound probe is not only help the medical workers to improve working efficiency, reduce labor intensity and working pressure, but also improve diagnostic confidence and treatment. Minimize diagnostic and treatment errors, complications, sequelae, medical accidents and disputes.

### Application directions

1. Visualization tools: invasive intervention guide, surgical and therapy guidance.
2. Emergency inspection: ER, ICU, Wild First Aid, battlefield rescue.
3. Preliminary examination: Ward Inspection, primary clinic examination medical examination, health screening, home care, family planning, etc.
4. Remote diagnosis, consultation, training: works on smart phone or tablet, easy telecommunications.

### Applicable Clinic

Anaesthesia, pain, ICU, urology, nephrology, cardiology, rehabilitation, orthopedics, gynaecology, reproductive, obstetrics, neonatology, pneumology, gastroenterology, hepatological surgery, general surgery, vascular surgery, thyroid surgery, skull surgery, neurology, transplantation, ophthalmology, dermatology, emergency, nursing, inpatient, physical examination, and ER ambulance, primary care, family planning centers, family medicine, home care, nursing home, prisons, plastic surgery, small needle knife/acupuncture treatment clinic, sports medicine, battle field ambulance, disaster ambulance, etc.

### Example of usages

Puncture/intervention guide: thyroid ablation, neck vein puncture, subclavian vein puncture, and neck and arm nerves, canal of arantius, spine puncture, radial vein injection, percutaneous renal surgery guide, hemodialysis catheter/thrombosis monitoring, abortion, bile duct puncture, hydropsartuli extraction, pain therapy and cosmetic surgery, urine catheterization. Emergency inspection:internal bleeding, Pleural effusion, pneumothorax, Atelectasis of lung, Temporal / posterior auricular fistula, pericardial effusion. Daily inspection:thyroid, breast, liver cirrhosis, fatty liver, prostate/pelvis, stroke screening, retinal artery, uterus, follicular monitoring, fetus, musculoskeletal, podiatry, fractures, varicose veins, spleen, bladder/urinary function, urine volume measurement.

**Guidelines for emergency inspection**

**Emergency center / ambulance**

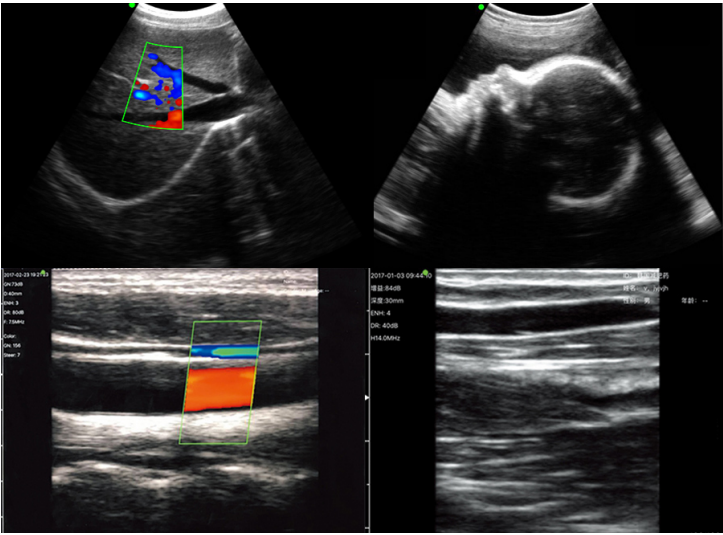
organ damage, internal bleeding, pneumothorax, peritoneal effusion, cardiovascular cardiovascular ab-normalities, thrombosis, fracture and other inspection to determine

**Army Battlefield Ambulance**

Discover and evaluate organ damage, internal bleeding and other injuries, thrombosis, fractures and other tests to determine the injection of acupun-cture and surgical visual guidance

**Disaster Relief Medical Group**

Discovery and assessment of organ damage, internal bleeding and other injuries, thrombosis, fractures and otherchecks to determine



## Inquiry

Write down your demand below and we will contact you within 24 hours

Description:

(Required)

Company Name:

Address:

Your Name :

(Required)

Tel Number:

(Required)

E-mail:

(Required)

Submit



Sonostar Technologies Co., Limited is a professional ultrasound equipment R&D, manufacturing and sales company, has long provided ODM (commissioned to design) and OEM of domestic and foreign trade enterprises services, warmly welcome you contact and visit our company.

Learn More

#### Contact Us



Tel : +8620 32382095



Email : sonostar@sonostar.net



Address :fifthfloor, C Building, #27 Yayingshi Road, Science Town, Guangzhou, China.

QR Code

